



[Go to Product page](#)

Datasheet for ABIN7242254
anti-BPIFB3 antibody

3 Images

Overview

Quantity:	200 µL
Target:	BPIFB3
Reactivity:	Human
Host:	Rabbit
Clonality:	Polyclonal
Conjugate:	This BPIFB3 antibody is un-conjugated
Application:	Western Blotting (WB), ELISA, Immunohistochemistry (IHC)

Product Details

Immunogen:	Synthetic peptide of human BPIFB3
Isotype:	IgG
Characteristics:	Polyclonal Antibody
Purification:	Affinity purification

Target Details

Target:	BPIFB3
Alternative Name:	BPIFB3 (BPIFB3 Products)
Background:	BPI fold-containing family B member 3 may have the capacity to recognize and bind specific classes of odorants. May act as a carrier molecule, transporting odorants across the mucus layer to access receptor sites. May serve as a primary defense mechanism by recognizing and removing potentially harmful odorants or pathogenic microorganisms from the mucosa or

Target Details

clearing excess odorant from mucus to enable new odorant stimuli to be received.

Molecular Weight: 50 kDa

NCBI Accession: [NP_872599](#)

UniProt: [P59826](#)

Application Details

Application Notes: WB 1:1000-1:5000, IHC 1:100-1:300

Restrictions: For Research Use only

Handling

Format: Liquid

Concentration: 0.8 mg/mL

Buffer: PBS with 0.05 % sodium azide and 50 % glycerol, PH7.4

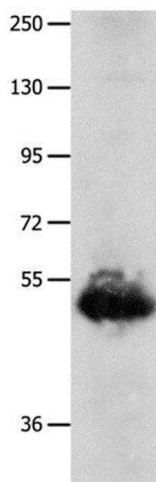
Preservative: Sodium azide

Precaution of Use: This product contains Sodium azide: a POISONOUS AND HAZARDOUS SUBSTANCE which should be handled by trained staff only.

Storage: -20 °C

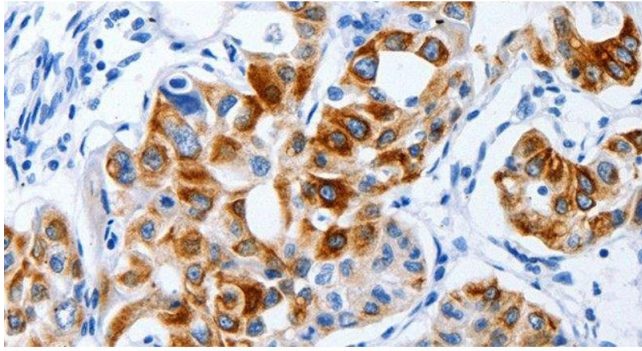
Storage Comment: Store at -20°C. Avoid freeze / thaw cycles.

Images



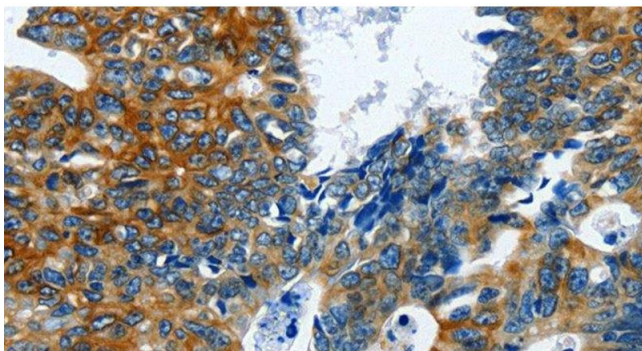
Western Blotting

Image 1. Western Blot analysis of Human lung cancer tissue using BPIFB3 Polyclonal Antibody at dilution of 1:1600



Immunohistochemistry (Paraffin-embedded Sections)

Image 2. Immunohistochemistry of paraffin-embedded Human lung cancer using BPIFB3 Polyclonal Antibody at dilution of 1:120



Immunohistochemistry (Paraffin-embedded Sections)

Image 3. Immunohistochemistry of paraffin-embedded Human colon cancer using BPIFB3 Polyclonal Antibody at dilution of 1:120