

Datasheet for ABIN7242260

anti-LRP3 antibody[Go to Product page](#)**1** Image

Overview

Quantity:	200 µL
Target:	LRP3
Reactivity:	Human
Host:	Rabbit
Clonality:	Polyclonal
Conjugate:	This LRP3 antibody is un-conjugated
Application:	ELISA, Immunohistochemistry (IHC)

Product Details

Immunogen:	Synthetic peptide of human LRP3
Isotype:	IgG
Characteristics:	Polyclonal Antibody
Purification:	Affinity purification

Target Details

Target:	LRP3
Alternative Name:	LRP3 (LRP3 Products)
Background:	Low density lipoprotein receptor-related protein 3(LRP-3) is a protein that in humans is encoded by the LRP3 gene. Probable receptor, which may be involved in the internalization of lipophilic molecules and/or signal transduction. Its precise role is however unclear, since it does not bind to very low density lipoprotein (VLDL) or to LRPAP1 in vitro.

Target Details

NCBI Accession: [NP_002324](#)

UniProt: [O75074](#)

Application Details

Application Notes: IHC 1:100-1:300

Restrictions: For Research Use only

Handling

Format: Liquid

Concentration: 0.7 mg/mL

Buffer: PBS with 0.05 % sodium azide and 50 % glycerol, PH7.4

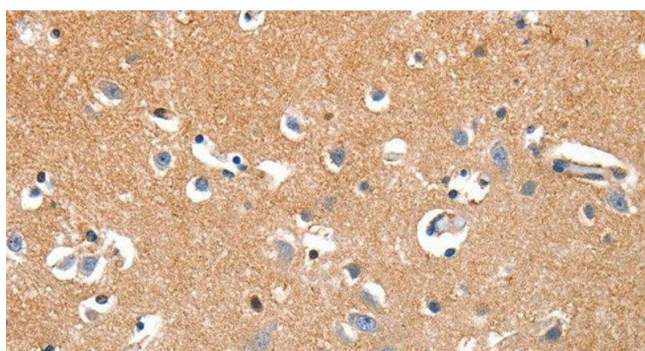
Preservative: Sodium azide

Precaution of Use: This product contains Sodium azide: a POISONOUS AND HAZARDOUS SUBSTANCE which should be handled by trained staff only.

Storage: -20 °C

Storage Comment: Store at -20°C. Avoid freeze / thaw cycles.

Images



Immunohistochemistry (Paraffin-embedded Sections)

Image 1. Immunohistochemistry of paraffin-embedded Human brain tissue using LRP3 Polyclonal Antibody at dilution 1:80