

Datasheet for ABIN7242281

**anti-MCM4 antibody**

3 Images

[Go to Product page](#)

## Overview

Quantity:	200 µL
Target:	MCM4
Reactivity:	Human, Mouse
Host:	Rabbit
Clonality:	Polyclonal
Conjugate:	This MCM4 antibody is un-conjugated
Application:	Western Blotting (WB), Immunohistochemistry (IHC), ELISA

## Product Details

Immunogen:	Synthetic peptide of human MCM4
Isotype:	IgG
Characteristics:	Polyclonal Antibody
Purification:	Affinity purification

## Target Details

Target:	MCM4
Alternative Name:	MCM4 ( <a href="#">MCM4 Products</a> )
Background:	The protein encoded by this gene is one of the highly conserved mini-chromosome maintenance proteins (MCM) that are essential for the initiation of eukaryotic genome replication. The hexameric protein complex formed by MCM proteins is a key component of the pre-replication complex (pre_RC) and may be involved in the formation of replication forks and

## Target Details

in the recruitment of other DNA replication related proteins. The MCM complex consisting of this protein and MCM2, 6 and 7 proteins possesses DNA helicase activity, and may act as a DNA unwinding enzyme. The phosphorylation of this protein by CDC2 kinase reduces the DNA helicase activity and chromatin binding of the MCM complex. This gene is mapped to a region on the chromosome 8 head-to-head next to the PRKDC/DNA-PK, a DNA-activated protein kinase involved in the repair of DNA double-strand breaks. Alternatively spliced transcript variants encoding the same protein have been reported.

Molecular Weight: 97 kDa

NCBI Accession: [NP\\_877423](#)

UniProt: [P33991](#)

Pathways: [DNA Damage Repair](#), [Mitotic G1-G1/S Phases](#), [DNA Replication](#), [Chromatin Binding](#), [Synthesis of DNA](#)

## Application Details

Application Notes: WB 1:500-1:2000, IHC 1:50-1:200

Restrictions: For Research Use only

## Handling

Format: Liquid

Concentration: 0.3 mg/mL

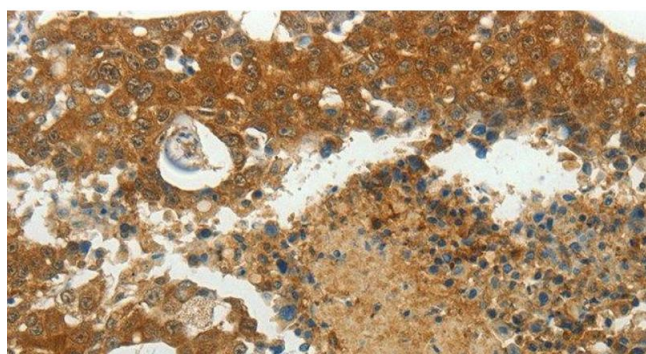
Buffer: PBS with 0.05 % sodium azide and 50 % glycerol, PH7.4

Preservative: Sodium azide

Precaution of Use: This product contains Sodium azide: a POISONOUS AND HAZARDOUS SUBSTANCE which should be handled by trained staff only.

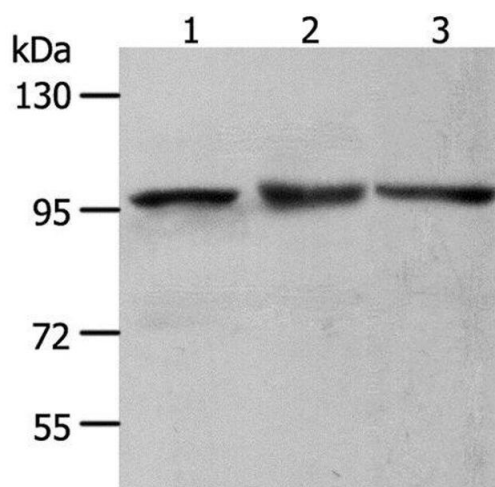
Storage: -20 °C

Storage Comment: Store at -20°C. Avoid freeze / thaw cycles.



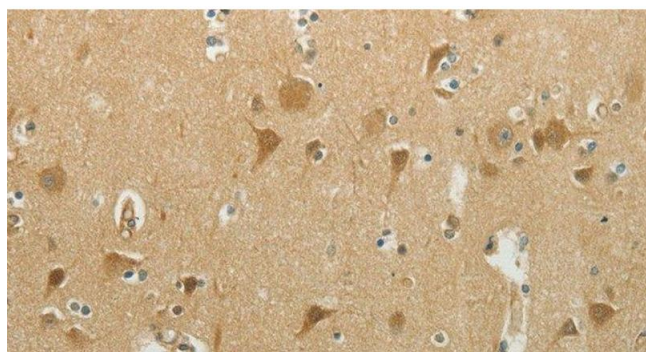
#### Immunohistochemistry (Paraffin-embedded Sections)

**Image 1.** Immunohistochemistry of paraffin-embedded Human breast cancer using MCM4 Polyclonal Antibody at dilution of 1:40



#### Western Blotting

**Image 2.** Western Blot analysis of NIH/3T3, HeLa and K562 cell using MCM4 Polyclonal Antibody at dilution of 1:700



#### Immunohistochemistry (Paraffin-embedded Sections)

**Image 3.** Immunohistochemistry of paraffin-embedded Human brain using MCM4 Polyclonal Antibody at dilution of 1:40