

Datasheet for ABIN7242329
anti-14-3-3 gamma antibody

2 Images

[Go to Product page](#)

Overview

Quantity:	200 µL
Target:	14-3-3 gamma (YWHAG1)
Reactivity:	Human, Mouse, Rat
Host:	Rabbit
Clonality:	Polyclonal
Conjugate:	This 14-3-3 gamma antibody is un-conjugated
Application:	Western Blotting (WB), ELISA, Immunohistochemistry (IHC)

Product Details

Immunogen:	Synthetic peptide of human YWHAG
Isotype:	IgG
Characteristics:	Polyclonal Antibody
Purification:	Affinity purification

Target Details

Target:	14-3-3 gamma (YWHAG1)
Alternative Name:	YWHAG (YWHAG1 Products)
Background:	This gene product belongs to the 14-3-3 family of proteins which mediate signal transduction by binding to phosphoserine-containing proteins. This highly conserved protein family is found in both plants and mammals, and this protein is 100 % identical to the rat ortholog. It is induced by growth factors in human vascular smooth muscle cells, and is also highly expressed in

Target Details

skeletal and heart muscles, suggesting an important role for this protein in muscle tissue. It has been shown to interact with RAF1 and protein kinase C, proteins involved in various signal transduction pathways.

Molecular Weight: 28 kDa

NCBI Accession: [NP_036611](#)

UniProt: [P61981](#)

Pathways: [Myometrial Relaxation and Contraction, M Phase](#)

Application Details

Application Notes: WB 1:1000-1:5000, IHC 1:50-1:200

Restrictions: For Research Use only

Handling

Format: Liquid

Concentration: 1.1 mg/mL

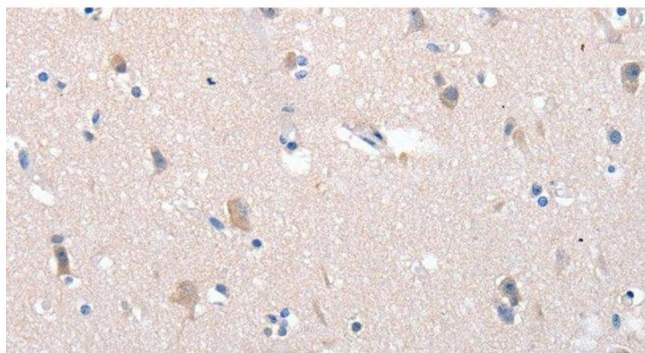
Buffer: PBS with 0.05 % sodium azide and 50 % glycerol, PH7.4

Preservative: Sodium azide

Precaution of Use: This product contains Sodium azide: a POISONOUS AND HAZARDOUS SUBSTANCE which should be handled by trained staff only.

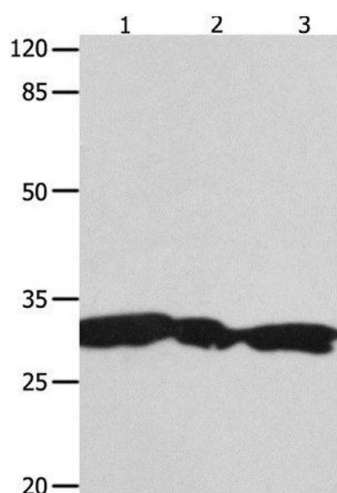
Storage: -20 °C

Storage Comment: Store at -20°C. Avoid freeze / thaw cycles.



Immunohistochemistry (Paraffin-embedded Sections)

Image 1. Immunohistochemistry of paraffin-embedded Human brain using YWHAG Polyclonal Antibody at dilution of 1:100



Western Blotting

Image 2. Western Blot analysis of Hela, 293T and Jurkat cell using YWHAG Polyclonal Antibody at dilution of 1:1800