

Datasheet for ABIN7242365

anti-PAR1 antibody

3 Images

[Go to Product page](#)

Overview

Quantity:	200 µL
Target:	PAR1 (F2R)
Reactivity:	Human
Host:	Rabbit
Clonality:	Polyclonal
Conjugate:	This PAR1 antibody is un-conjugated
Application:	Western Blotting (WB), ELISA, Immunohistochemistry (IHC)

Product Details

Immunogen:	Synthetic peptide of human F2R
Isotype:	IgG
Characteristics:	Polyclonal Antibody
Purification:	Affinity purification

Target Details

Target:	PAR1 (F2R)
Alternative Name:	F2R (F2R Products)
Background:	Coagulation factor II receptor is a 7-transmembrane receptor involved in the regulation of thrombotic response. Proteolytic cleavage leads to the activation of the receptor. F2R is a G-protein coupled receptor family member. High affinity receptor for activated thrombin coupled to G proteins that stimulate phosphoinositide hydrolysis. May play a role in platelets activation

Target Details

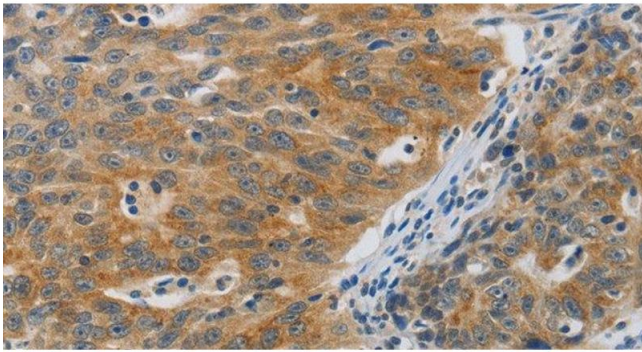
	and in vascular development.
Molecular Weight:	47 kDa
NCBI Accession:	NP_001983
UniProt:	P25116
Pathways:	Nuclear Receptor Transcription Pathway , Skeletal Muscle Fiber Development , Positive Regulation of Endopeptidase Activity , Protein targeting to Nucleus

Application Details

Application Notes:	WB 1:500-1:2000, IHC 1:50-1:200
Restrictions:	For Research Use only

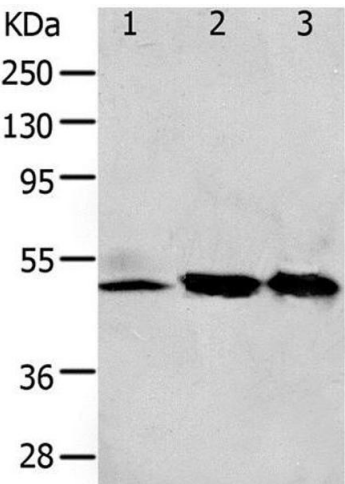
Handling

Format:	Liquid
Concentration:	0.3 mg/mL
Buffer:	PBS with 0.05 % sodium azide and 50 % glycerol, PH7.4
Preservative:	Sodium azide
Precaution of Use:	This product contains Sodium azide: a POISONOUS AND HAZARDOUS SUBSTANCE which should be handled by trained staff only.
Storage:	-20 °C
Storage Comment:	Store at -20°C. Avoid freeze / thaw cycles.



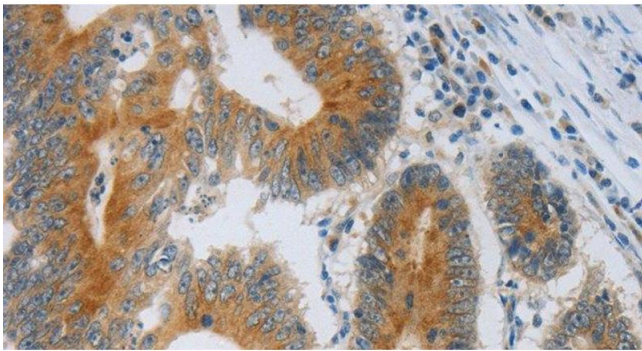
Immunohistochemistry (Paraffin-embedded Sections)

Image 1. Immunohistochemistry of paraffin-embedded Human ovarian cancer using F2R Polyclonal Antibody at dilution of 1:40



Western Blotting

Image 2. Western Blot analysis of 293T and K562 cell, Human fetal kidney tissue using F2R Polyclonal Antibody at dilution of 1:650



Immunohistochemistry (Paraffin-embedded Sections)

Image 3. Immunohistochemistry of paraffin-embedded Human colon cancer using F2R Polyclonal Antibody at dilution of 1:40