

Datasheet for ABIN7242395
anti-Peroxiredoxin 2 antibody

3 Images

[Go to Product page](#)

Overview

Quantity:	200 µL
Target:	Peroxiredoxin 2 (PRDX2)
Reactivity:	Human, Mouse, Rat
Host:	Rabbit
Clonality:	Polyclonal
Conjugate:	This Peroxiredoxin 2 antibody is un-conjugated
Application:	Western Blotting (WB), Immunohistochemistry (IHC), ELISA

Product Details

Immunogen:	Synthetic peptide of human PRDX2
Isotype:	IgG
Characteristics:	Polyclonal Antibody
Purification:	Affinity purification

Target Details

Target:	Peroxiredoxin 2 (PRDX2)
Alternative Name:	PRDX2 (PRDX2 Products)
Background:	This gene encodes a member of the peroxiredoxin family of antioxidant enzymes, which reduce hydrogen peroxide and alkyl hydroperoxides. The encoded protein plays an antioxidant protective role in cells, and it may contribute to the antiviral activity of CD8(+) T-cells. The crystal structure of this protein has been resolved to 2.7 angstroms. This protein prevents

Target Details

hemolytic anemia from oxidative stress by stabilizing hemoglobin, thus making this gene a therapeutic target for patients with hemolytic anemia. This protein may have a proliferative effect and play a role in cancer development or progression. Related pseudogenes have been identified on chromosomes 5, 6, 10 and 13.

Molecular Weight: 22 kDa

NCBI Accession: [NP_005800](#)

UniProt: [P32119](#)

Application Details

Application Notes: WB 1:500-1:2000, IHC 1:100-1:300

Restrictions: For Research Use only

Handling

Format: Liquid

Concentration: 0.6 mg/mL

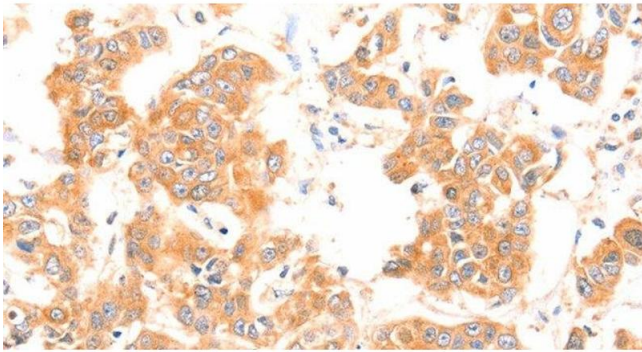
Buffer: PBS with 0.05 % sodium azide and 50 % glycerol, PH7.4

Preservative: Sodium azide

Precaution of Use: This product contains Sodium azide: a POISONOUS AND HAZARDOUS SUBSTANCE which should be handled by trained staff only.

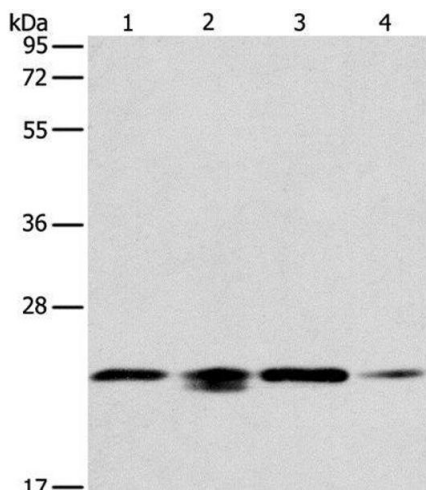
Storage: -20 °C

Storage Comment: Store at -20°C. Avoid freeze / thaw cycles.



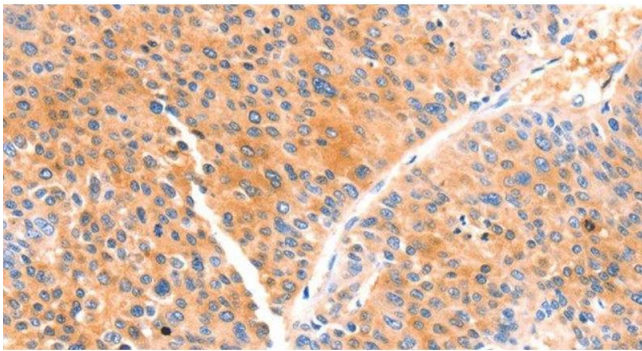
Immunohistochemistry (Paraffin-embedded Sections)

Image 1. Immunohistochemistry of paraffin-embedded Human breast cancer using PRDX2 Polyclonal Antibody at dilution of 1:80



Western Blotting

Image 2. Western Blot analysis of 293T, hela, PC3 and NIH/3T3 cell using PRDX2 Polyclonal Antibody at dilution of 1:750



Immunohistochemistry (Paraffin-embedded Sections)

Image 3. Immunohistochemistry of paraffin-embedded Human liver cancer using PRDX2 Polyclonal Antibody at dilution of 1:80