



[Go to Product page](#)

Datasheet for ABIN7242419

anti-SLC1A4 antibody

3 Images

Overview

Quantity:	200 µL
Target:	SLC1A4
Reactivity:	Human, Mouse
Host:	Rabbit
Clonality:	Polyclonal
Conjugate:	This SLC1A4 antibody is un-conjugated
Application:	Western Blotting (WB), Immunohistochemistry (IHC), ELISA

Product Details

Immunogen:	Synthetic peptide of human SLC1A4
Isotype:	IgG
Characteristics:	Polyclonal Antibody
Purification:	Affinity purification

Target Details

Target:	SLC1A4
Alternative Name:	SLC1A4 (SLC1A4 Products)
Background:	Neutral amino acid transporter Ais a protein that in humans is encoded by the SLC1A4 gene. In melanocytic cells SLC1A4 gene expression may be regulated by MITF. ASCT1 does not transport glutamate or aspartate but alanine, serine, cysteine, and threonine instead. ASCT1 transporter functions primarily as an amino acid exchanger. Transport is associated with a

Target Details

chloride channel activity that is thermodynamically uncoupled from amino acid transport.

Molecular Weight: 56 kDa

NCBI Accession: [NP_003029](#)

UniProt: [P43007](#)

Pathways: [Dicarboxylic Acid Transport](#)

Application Details

Application Notes: WB 1:1000-1:5000, IHC 1:100-1:300

Restrictions: For Research Use only

Handling

Format: Liquid

Concentration: 0.8 mg/mL

Buffer: PBS with 0.05 % sodium azide and 50 % glycerol, PH7.4

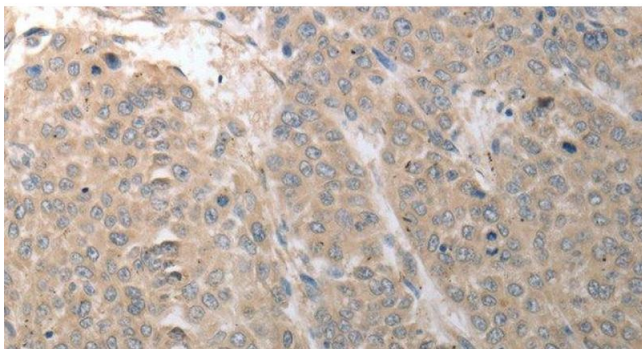
Preservative: Sodium azide

Precaution of Use: This product contains Sodium azide: a POISONOUS AND HAZARDOUS SUBSTANCE which should be handled by trained staff only.

Storage: -20 °C

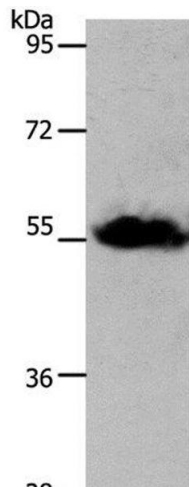
Storage Comment: Store at -20°C. Avoid freeze / thaw cycles.

Images



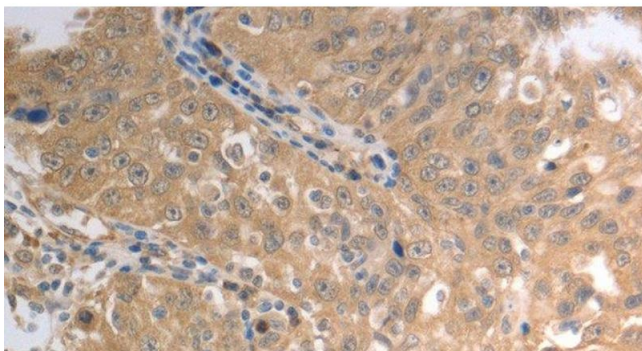
Immunohistochemistry (Paraffin-embedded Sections)

Image 1. Immunohistochemistry of paraffin-embedded Human liver cancer using SLC1A4 Polyclonal Antibody at dilution of 1:70



Western Blotting

Image 2. Western Blot analysis of Human liver cancer tissue using SLC1A4 Polyclonal Antibody at dilution of 1:1250



Immunohistochemistry (Paraffin-embedded Sections)

Image 3. Immunohistochemistry of paraffin-embedded Human ovarian cancer using SLC1A4 Polyclonal Antibody at dilution of 1:70