

Datasheet for ABIN7242422

**anti-SLC1A5 antibody**[Go to Product page](#)**1** Image

## Overview

Quantity:	200 µL
Target:	SLC1A5
Reactivity:	Human, Mouse
Host:	Rabbit
Clonality:	Polyclonal
Conjugate:	This SLC1A5 antibody is un-conjugated
Application:	Western Blotting (WB), ELISA

## Product Details

Immunogen:	Synthetic peptide of human SLC1A5
Isotype:	IgG
Characteristics:	Polyclonal Antibody
Purification:	Affinity purification

## Target Details

Target:	SLC1A5
Alternative Name:	SLC1A5 ( <a href="#">SLC1A5 Products</a> )
Background:	Neutral amino acid transporter B(0) is a protein that in humans is encoded by the SLC1A5 gene. Has a broad substrate specificity, a preference for zwitterionic amino acids, and a sodium-dependence. It accepts as substrates all neutral amino acids, including glutamine, asparagine, and branched-chain and aromatic amino acids, and excludes methylated amino acids, anionic

## Target Details

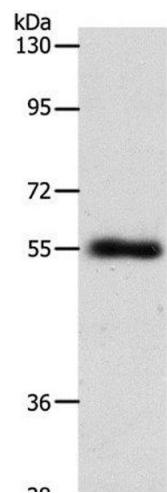
	amino acids, and cationic amino acids. Acts as a cell surface receptor for feline endogenous virus RD114, baboon M7 endogenous virus and type D simian retroviruses.
Molecular Weight:	57 kDa
NCBI Accession:	<a href="#">NP_005619</a>
UniProt:	<a href="#">Q15758</a>
Pathways:	<a href="#">Dicarboxylic Acid Transport</a> , <a href="#">Warburg Effect</a>

## Application Details

Application Notes:	WB 1:500-1:2000
Restrictions:	For Research Use only

## Handling

Format:	Liquid
Concentration:	0.5 mg/mL
Buffer:	PBS with 0.05 % sodium azide and 50 % glycerol, PH7.4
Preservative:	Sodium azide
Precaution of Use:	This product contains Sodium azide: a POISONOUS AND HAZARDOUS SUBSTANCE which should be handled by trained staff only.
Storage:	-20 °C
Storage Comment:	Store at -20°C. Avoid freeze / thaw cycles.



Western Blotting

**Image 1.** Western Blot analysis of Mouse lung tissue using SLC1A5 Polyclonal Antibody at dilution of 1:600