

Datasheet for ABIN7242425

**anti-SLC39A6 antibody****2** Images[Go to Product page](#)

## Overview

Quantity:	200 µL
Target:	SLC39A6
Reactivity:	Human, Mouse, Rat
Host:	Rabbit
Clonality:	Polyclonal
Conjugate:	This SLC39A6 antibody is un-conjugated
Application:	Western Blotting (WB), ELISA, Immunohistochemistry (IHC)

## Product Details

Immunogen:	Synthetic peptide of human SLC39A6
Isotype:	IgG
Characteristics:	Polyclonal Antibody
Purification:	Affinity purification

## Target Details

Target:	SLC39A6
Alternative Name:	SLC39A6 ( <a href="#">SLC39A6 Products</a> )
Background:	Zinc is an essential cofactor for hundreds of enzymes. It is involved in protein, nucleic acid, carbohydrate, and lipid metabolism, as well as in the control of gene transcription, growth, development, and differentiation. SLC39A6 belongs to a subfamily of proteins that show structural characteristics of zinc transporters.

## Target Details

Molecular Weight:	49 kDa
NCBI Accession:	<a href="#">NP_001092876</a>
UniProt:	<a href="#">Q13433</a>
Pathways:	<a href="#">Transition Metal Ion Homeostasis</a>

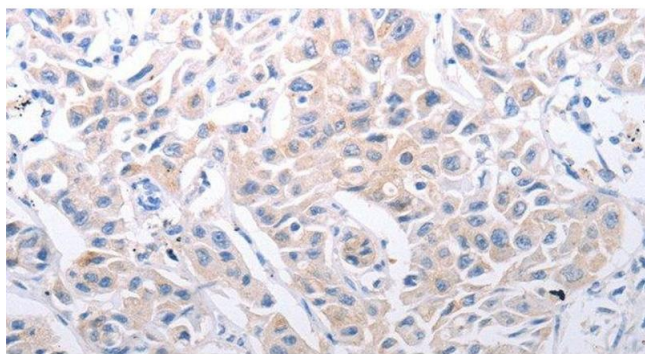
## Application Details

Application Notes:	WB 1:500-1:2000, IHC 1:25-1:100
Restrictions:	For Research Use only

## Handling

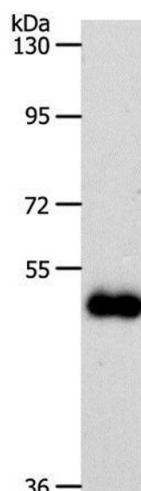
Format:	Liquid
Concentration:	0.4 mg/mL
Buffer:	PBS with 0.05 % sodium azide and 50 % glycerol, PH7.4
Preservative:	Sodium azide
Precaution of Use:	This product contains Sodium azide: a POISONOUS AND HAZARDOUS SUBSTANCE which should be handled by trained staff only.
Storage:	-20 °C
Storage Comment:	Store at -20°C. Avoid freeze / thaw cycles.

## Images



### Immunohistochemistry (Paraffin-embedded Sections)

**Image 1.** Immunohistochemistry of paraffin-embedded Human lung cancer using SLC39A6 Polyclonal Antibody at dilution of 1:30



#### Western Blotting

**Image 2.** Western Blot analysis of Human colon cancer tissue using SLC39A6 Polyclonal Antibody at dilution of 1:500