



Datasheet for ABIN7242461 anti-AKR1B1 antibody



[Go to Product page](#)

3 Images

Overview

Quantity:	200 µL
Target:	AKR1B1
Reactivity:	Human
Host:	Rabbit
Clonality:	Polyclonal
Conjugate:	This AKR1B1 antibody is un-conjugated
Application:	Western Blotting (WB), ELISA, Immunohistochemistry (IHC)

Product Details

Immunogen:	Synthetic peptide of human AKR1B1
Isotype:	IgG
Characteristics:	Polyclonal Antibody
Purification:	Affinity purification

Target Details

Target:	AKR1B1
Alternative Name:	AKR1B1 (AKR1B1 Products)
Background:	This gene encodes a member of the aldo/keto reductase superfamily, which consists of more than 40 known enzymes and proteins. This member catalyzes the reduction of a number of aldehydes, including the aldehyde form of glucose, and is thereby implicated in the development of diabetic complications by catalyzing the reduction of glucose to sorbitol.

Target Details

Multiple pseudogenes have been identified for this gene. The nomenclature system used by the HUGO Gene Nomenclature Committee to define human aldo-keto reductase family members is known to differ from that used by the Mouse Genome Informatics database.

Molecular Weight: 36 kDa

NCBI Accession: [NP_001619](#)

UniProt: [P15121](#)

Pathways: [Metabolism of Steroid Hormones and Vitamin D](#), [C21-Steroid Hormone Metabolic Process](#), [Monocarboxylic Acid Catabolic Process](#)

Application Details

Application Notes: WB 1:500-1:2000, IHC 1:50-1:200

Restrictions: For Research Use only

Handling

Format: Liquid

Concentration: 0.2 mg/mL

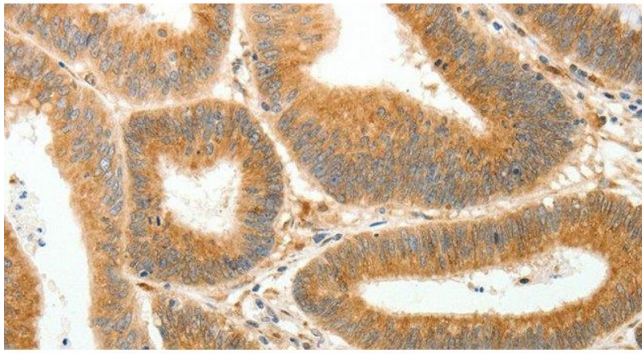
Buffer: PBS with 0.05 % sodium azide and 50 % glycerol, PH7.4

Preservative: Sodium azide

Precaution of Use: This product contains Sodium azide: a POISONOUS AND HAZARDOUS SUBSTANCE which should be handled by trained staff only.

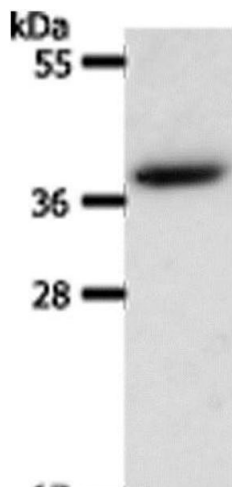
Storage: -20 °C

Storage Comment: Store at -20°C. Avoid freeze / thaw cycles.



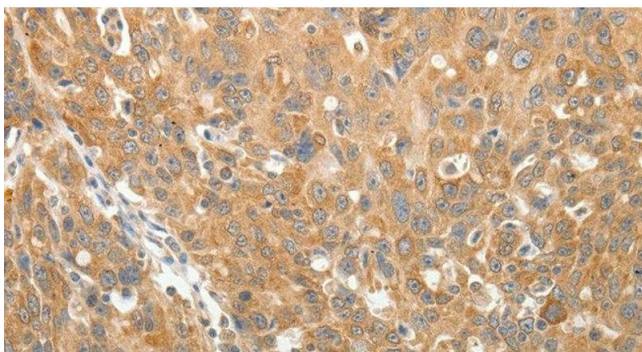
Immunohistochemistry (Paraffin-embedded Sections)

Image 1. Immunohistochemistry of paraffin-embedded Human colon cancer using AKR1B1 Polyclonal Antibody at dilution of 1:30



Western Blotting

Image 2. Western Blot analysis of Hela cell using AKR1B1 Polyclonal Antibody at dilution of 1:550



Immunohistochemistry (Paraffin-embedded Sections)

Image 3. Immunohistochemistry of paraffin-embedded Human ovarian cancer using AKR1B1 Polyclonal Antibody at dilution of 1:30