

Datasheet for ABIN7242479

anti-ITGA2 antibody**3** Images[Go to Product page](#)

Overview

Quantity:	200 µL
Target:	ITGA2
Reactivity:	Human
Host:	Rabbit
Clonality:	Polyclonal
Conjugate:	This ITGA2 antibody is un-conjugated
Application:	Western Blotting (WB), Immunohistochemistry (IHC), ELISA

Product Details

Immunogen:	Synthetic peptide of human ITGA2
Isotype:	IgG
Characteristics:	Polyclonal Antibody
Purification:	Affinity purification

Target Details

Target:	ITGA2
Alternative Name:	ITGA2 (ITGA2 Products)
Background:	This gene encodes the alpha subunit of a transmembrane receptor for collagens and related proteins. The encoded protein forms a heterodimer with a beta subunit and mediates the adhesion of platelets and other cell types to the extracellular matrix. Loss of the encoded protein is associated with bleeding disorder platelet-type 9. Antibodies against this protein are

Target Details

found in several immune disorders, including neonatal alloimmune thrombocytopenia. This gene is located adjacent to a related alpha subunit gene. Alternative splicing results in multiple transcript variants.

Molecular Weight: 129 kDa

NCBI Accession: [NP_002194](#)

UniProt: [P17301](#)

Pathways: [CXCR4-mediated Signaling Events](#), [Smooth Muscle Cell Migration](#), [Integrin Complex](#)

Application Details

Application Notes: WB 1:200-1:1000, IHC 1:25-1:100

Restrictions: For Research Use only

Handling

Format: Liquid

Concentration: 0.4 mg/mL

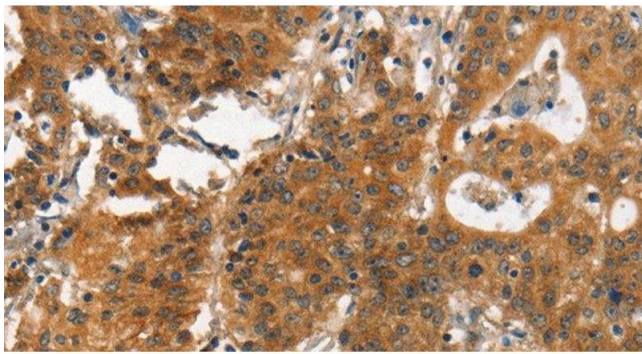
Buffer: PBS with 0.05 % sodium azide and 50 % glycerol, PH7.4

Preservative: Sodium azide

Precaution of Use: This product contains Sodium azide: a POISONOUS AND HAZARDOUS SUBSTANCE which should be handled by trained staff only.

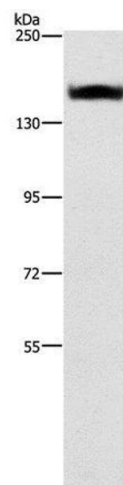
Storage: -20 °C

Storage Comment: Store at -20°C. Avoid freeze / thaw cycles.



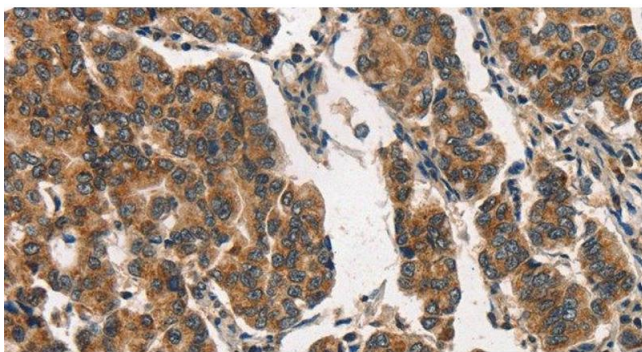
Immunohistochemistry (Paraffin-embedded Sections)

Image 1. Immunohistochemistry of paraffin-embedded Human gastric cancer using ITGA2 Polyclonal Antibody at dilution of 1:30



Western Blotting

Image 2. Western Blot analysis of A431 cell using ITGA2 Polyclonal Antibody at dilution of 1:300



Immunohistochemistry (Paraffin-embedded Sections)

Image 3. Immunohistochemistry of paraffin-embedded Human breast cancer using ITGA2 Polyclonal Antibody at dilution of 1:30