



Datasheet for ABIN7242488 anti-PRKD3 antibody



[Go to Product page](#)

3 Images

Overview

| | |
|--------------|--|
| Quantity: | 200 µL |
| Target: | PRKD3 |
| Reactivity: | Human, Mouse |
| Host: | Rabbit |
| Clonality: | Polyclonal |
| Conjugate: | This PRKD3 antibody is un-conjugated |
| Application: | Western Blotting (WB), Immunohistochemistry (IHC), ELISA |

Product Details

| | |
|------------------|----------------------------------|
| Immunogen: | Synthetic peptide of human PRKD3 |
| Isotype: | IgG |
| Characteristics: | Polyclonal Antibody |
| Purification: | Affinity purification |

Target Details

| | |
|-------------------|---|
| Target: | PRKD3 |
| Alternative Name: | PRKD3 (PRKD3 Products) |
| Background: | Protein kinase C (PKC) is a family of serine- and threonine-specific protein kinases that can be activated by calcium and the second messenger diacylglycerol. PKC family members phosphorylate a wide variety of protein targets and are known to be involved in diverse cellular signaling pathways. PKC family members also serve as major receptors for phorbol esters, a |

Target Details

class of tumor promoters. Each Human, Mouse member of the PKC family has a specific expression profile and is believed to play a distinct role. The protein encoded by this gene is one of the PKC family members.

Molecular Weight: 100 kDa

NCBI Accession: [NP_005804](#)

UniProt: [O94806](#)

Application Details

Application Notes: WB 1:200-1:1000, IHC 1:50-1:200

Restrictions: For Research Use only

Handling

Format: Liquid

Concentration: 1.1 mg/mL

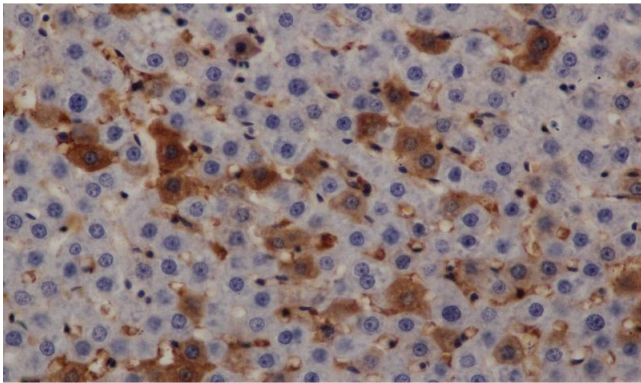
Buffer: PBS with 0.05 % sodium azide and 50 % glycerol, PH7.4

Preservative: Sodium azide

Precaution of Use: This product contains Sodium azide: a POISONOUS AND HAZARDOUS SUBSTANCE which should be handled by trained staff only.

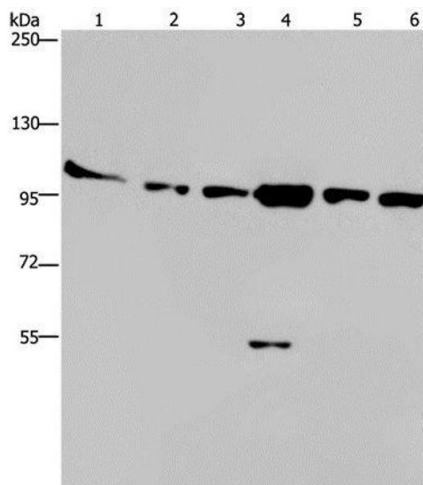
Storage: -20 °C

Storage Comment: Store at -20°C. Avoid freeze / thaw cycles.



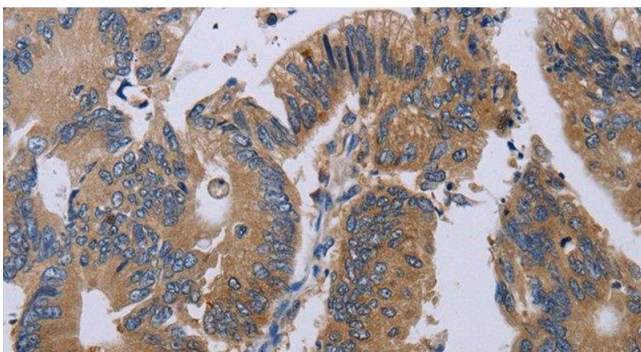
Immunohistochemistry (Paraffin-embedded Sections)

Image 1. Immunohistochemistry of paraffin-embedded Rat liver using PRKD3 Polyclonal Antibody at dilution of 1:200



Western Blotting

Image 2. Western Blot analysis of Human testis tissue, K562, A549, Raji, NIH/3T3 and Hela cell using PRKD3 Polyclonal Antibody at dilution of 1:200



Immunohistochemistry (Paraffin-embedded Sections)

Image 3. Immunohistochemistry of paraffin-embedded Human colon cancer using PRKD3 Polyclonal Antibody at dilution of 1:50