

Datasheet for ABIN7242497 anti-Lysine (K)-Specific Methyltransferase 2B (KMT2B) antibody

[Go to Product page](#)

1 Image

Overview

Quantity:	200 µL
Target:	Lysine (K)-Specific Methyltransferase 2B (KMT2B)
Reactivity:	Human
Host:	Rabbit
Clonality:	Polyclonal
Conjugate:	Un-conjugated
Application:	ELISA, Immunohistochemistry (IHC)

Product Details

Immunogen:	Synthetic peptide of human KMT2D
Isotype:	IgG
Characteristics:	Polyclonal Antibody
Purification:	Affinity purification

Target Details

Target:	Lysine (K)-Specific Methyltransferase 2B (KMT2B)
Alternative Name:	KMT2D (KMT2B Products)
Background:	The protein encoded by this gene is a histone methyltransferase that methylates the Lys-4 position of histone H3. The encoded protein is part of a large protein complex called ASCOM, which has been shown to be a transcriptional regulator of the beta-globin and estrogen receptor genes. Mutations in this gene have been shown to be a cause of Kabuki syndrome.

Target Details

NCBI Accession:	NP_003473
UniProt:	O14686
Pathways:	Warburg Effect

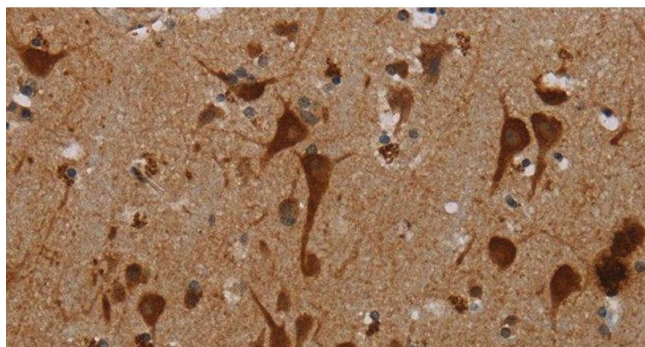
Application Details

Application Notes:	IHC 1:50-1:200
Restrictions:	For Research Use only

Handling

Format:	Liquid
Concentration:	0.4 mg/mL
Buffer:	PBS with 0.05 % sodium azide and 50 % glycerol, PH7.4
Preservative:	Sodium azide
Precaution of Use:	This product contains Sodium azide: a POISONOUS AND HAZARDOUS SUBSTANCE which should be handled by trained staff only.
Storage:	-20 °C
Storage Comment:	Store at -20°C. Avoid freeze / thaw cycles.

Images



Immunohistochemistry (Paraffin-embedded Sections)

Image 1. Immunohistochemistry of paraffin-embedded Human brain tissue using KMT2D Polyclonal Antibody at dilution 1:40