

Datasheet for ABIN7242503

**anti-Afadin antibody****2** Images[Go to Product page](#)

## Overview

|              |                                       |
|--------------|---------------------------------------|
| Quantity:    | 200 µL                                |
| Target:      | Afadin (MLLT4)                        |
| Reactivity:  | Human, Rat, Mouse                     |
| Host:        | Rabbit                                |
| Clonality:   | Polyclonal                            |
| Conjugate:   | This Afadin antibody is un-conjugated |
| Application: | ELISA, Immunohistochemistry (IHC)     |

## Product Details

|                  |                                  |
|------------------|----------------------------------|
| Immunogen:       | Synthetic peptide of human MLLT4 |
| Isotype:         | IgG                              |
| Characteristics: | Polyclonal Antibody              |
| Purification:    | Affinity purification            |

## Target Details

|                   |  |
|-------------------|--|
| Target:           | Afadin (MLLT4)   |
| Alternative Name: | AFDN ( <a href="#">MLLT4 Products</a> )  |
| Background:       | This gene encodes a multi-domain protein involved in signaling and organization of cell junctions during embryogenesis. It has also been identified as the fusion partner of acute lymphoblastic leukemia (ALL-1) gene, involved in acute myeloid leukemias with t(6,11)(q27,q23) translocation. Alternatively spliced transcript variants encoding different isoforms have been |

## Target Details

described for this gene, however, not all have been fully characterized.

|                 |   |
|-----------------|---|
| NCBI Accession: | <a href="#">NP_001035089</a>                    |
| UniProt:        | <a href="#">P55196</a>                          |
| Pathways:       | <a href="#">Cell-Cell Junction Organization</a> |

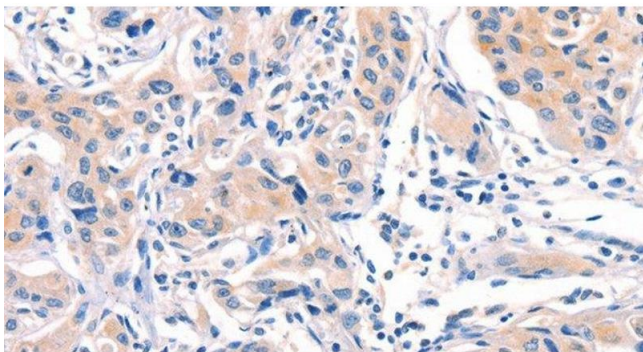
## Application Details

|                    |                       |
|--------------------|-----------------------|
| Application Notes: | IHC 1:50-1:200        |
| Restrictions:      | For Research Use only |

## Handling

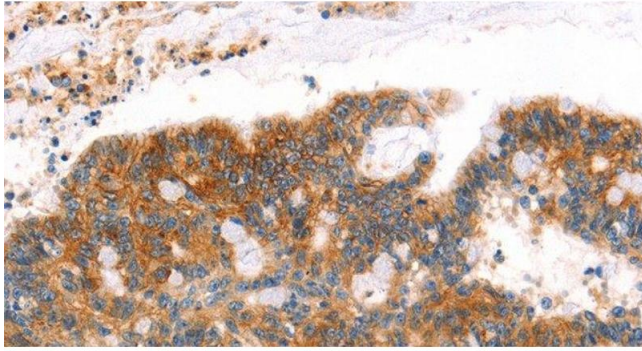
|                    |  |
|--------------------|--|
| Format:            | Liquid   |
| Concentration:     | 0.3 mg/mL  |
| Buffer:            | PBS with 0.05 % sodium azide and 50 % glycerol, PH7.4  |
| Preservative:      | Sodium azide   |
| Precaution of Use: | This product contains Sodium azide: a POISONOUS AND HAZARDOUS SUBSTANCE which should be handled by trained staff only. |
| Storage:           | -20 °C   |
| Storage Comment:   | Store at -20°C. Avoid freeze / thaw cycles.  |

## Images



### Immunohistochemistry (Paraffin-embedded Sections)

**Image 1.** Immunohistochemistry of paraffin-embedded Human lung cancer tissue using AFDN Polyclonal Antibody at dilution 1:40



#### Immunohistochemistry (Paraffin-embedded Sections)

**Image 2.** Immunohistochemistry of paraffin-embedded Human colon cancer tissue using AFDN Polyclonal Antibody at dilution 1:40