

Datasheet for ABIN7242527

anti-CDC25A antibody

3 Images

[Go to Product page](#)

Overview

Quantity:	200 µL
Target:	CDC25A
Reactivity:	Human, Mouse, Rat
Host:	Rabbit
Clonality:	Polyclonal
Conjugate:	This CDC25A antibody is un-conjugated
Application:	Western Blotting (WB), ELISA, Immunohistochemistry (IHC)

Product Details

Immunogen:	Synthetic peptide of human CDC25A
Isotype:	IgG
Characteristics:	Polyclonal Antibody
Purification:	Affinity purification

Target Details

Target:	CDC25A
Alternative Name:	CDC25A (CDC25A Products)
Background:	CDC25A is a member of the CDC25 family of phosphatases. CDC25A is required for progression from G1 to the S phase of the cell cycle. It activates the cyclin-dependent kinase CDC2 by removing two phosphate groups. CDC25A is specifically degraded in response to DNA damage, which prevents cells with chromosomal abnormalities from progressing through cell

Target Details

division. CDC25A is an oncogene, although its exact role in oncogenesis has not been demonstrated. Two transcript variants encoding different isoforms have been found for this gene.

Molecular Weight: 59 kDa

NCBI Accession: [NP_001780](#)

UniProt: [P30304](#)

Pathways: [Cell Division Cycle](#), [Mitotic G1-G1/S Phases](#), [M Phase](#)

Application Details

Application Notes: WB 1:200-1:1000, IHC 1:50-1:200

Restrictions: For Research Use only

Handling

Format: Liquid

Concentration: 0.2 mg/mL

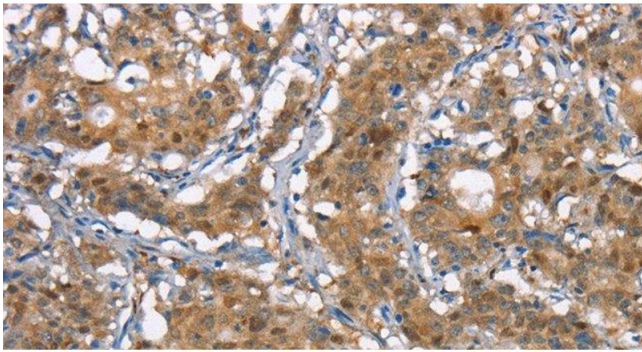
Buffer: PBS with 0.05 % sodium azide and 50 % glycerol, PH7.4

Preservative: Sodium azide

Precaution of Use: This product contains Sodium azide: a POISONOUS AND HAZARDOUS SUBSTANCE which should be handled by trained staff only.

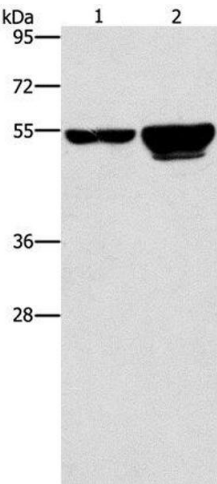
Storage: -20 °C

Storage Comment: Store at -20°C. Avoid freeze / thaw cycles.



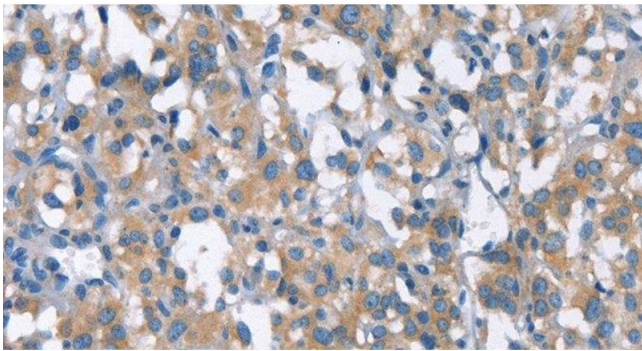
Immunohistochemistry (Paraffin-embedded Sections)

Image 1. Immunohistochemistry of paraffin-embedded Human gastric cancer using CDC25A Polyclonal Antibody at dilution of 1:50



Western Blotting

Image 2. Western Blot analysis of 231 and A549 cell using CDC25A Polyclonal Antibody at dilution of 1:300



Immunohistochemistry (Paraffin-embedded Sections)

Image 3. Immunohistochemistry of paraffin-embedded Human thyroid cancer using CDC25A Polyclonal Antibody at dilution of 1:50