

Datasheet for ABIN7242539

**anti-MYSM1 antibody**

3 Images

[Go to Product page](#)

## Overview

Quantity:	200 µL
Target:	MYSM1
Reactivity:	Human, Mouse
Host:	Rabbit
Clonality:	Polyclonal
Conjugate:	This MYSM1 antibody is un-conjugated
Application:	ELISA, Western Blotting (WB), Immunohistochemistry (IHC)

## Product Details

Immunogen:	Synthetic peptide of human MYSM1
Isotype:	IgG
Characteristics:	Polyclonal Antibody
Purification:	Affinity purification

## Target Details

Target:	MYSM1
Alternative Name:	MYSM1 ( <a href="#">MYSM1 Products</a> )
Background:	Metalloprotease that specifically deubiquitinates monoubiquitinated histone H2A, a specific tag for epigenetic transcriptional repression, thereby acting as a coactivator. Preferentially deubiquitinates monoubiquitinated H2A in hyperacetylated nucleosomes. Deubiquitination of histone H2A leads to facilitate the phosphorylation and dissociation of histone H1 from the

## Target Details

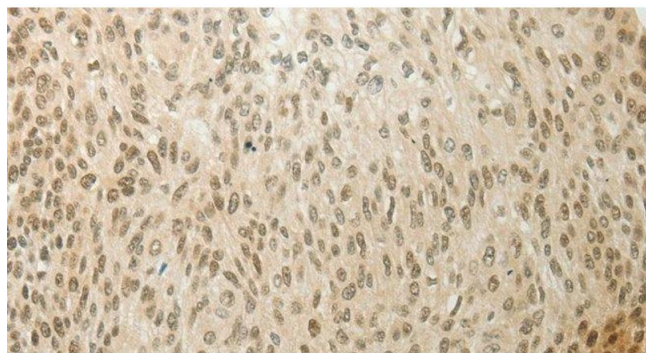
	nucleosome. Acts as a coactivator by participating in the initiation and elongation steps of androgen receptor (AR)-induced gene activation.
Molecular Weight:	95 kDa
NCBI Accession:	<a href="#">NP_001078956</a>
UniProt:	<a href="#">Q5VVJ2</a>
Pathways:	<a href="#">Chromatin Binding</a>

## Application Details

Application Notes:	WB 1:500-1:2000, IHC 1:50-1:200
Restrictions:	For Research Use only

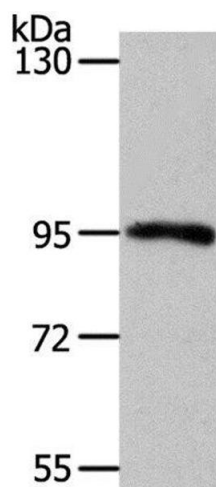
## Handling

Format:	Liquid
Concentration:	0.7 mg/mL
Buffer:	PBS with 0.05 % sodium azide and 50 % glycerol, PH7.4
Preservative:	Sodium azide
Precaution of Use:	This product contains Sodium azide: a POISONOUS AND HAZARDOUS SUBSTANCE which should be handled by trained staff only.
Storage:	-20 °C
Storage Comment:	Store at -20°C. Avoid freeze / thaw cycles.



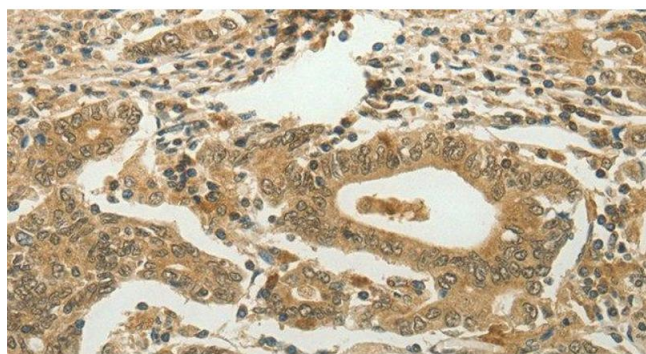
#### Immunohistochemistry (Paraffin-embedded Sections)

**Image 1.** Immunohistochemistry of paraffin-embedded Human cervical cancer using MYSM1 Polyclonal Antibody at dilution of 1:60



#### Western Blotting

**Image 2.** Western Blot analysis of Mouse kidney tissue using MYSM1 Polyclonal Antibody at dilution of 1:1100



#### Immunohistochemistry (Paraffin-embedded Sections)

**Image 3.** Immunohistochemistry of paraffin-embedded Human gastric cancer using MYSM1 Polyclonal Antibody at dilution of 1:60