

Datasheet for ABIN7242578

**anti-NPY1R antibody**

3 Images

[Go to Product page](#)

## Overview

Quantity:	200 µL
Target:	NPY1R
Reactivity:	Human, Rat
Host:	Rabbit
Clonality:	Polyclonal
Conjugate:	This NPY1R antibody is un-conjugated
Application:	Western Blotting (WB), ELISA, Immunohistochemistry (IHC)

## Product Details

Immunogen:	Synthetic peptide of human NPY1R
Isotype:	IgG
Characteristics:	Polyclonal Antibody
Purification:	Affinity purification

## Target Details

Target:	NPY1R
Alternative Name:	NPY1R ( <a href="#">NPY1R Products</a> )
Background:	Neuropeptide Y (NPY, MIM 162640) is one of the most abundant neuropeptides in the mammalian nervous system and exhibits a diverse range of important physiologic activities, including effects on psychomotor activity, food intake, regulation of central endocrine secretion, and potent vasoactive effects on the cardiovascular system. Two major subtypes of NPY (Y1

## Target Details

and Y2) have been defined by pharmacologic criteria. NPY receptors, such as NPY1R, have been identified in a variety of tissues, including brain, spleen, small intestine, kidney, testis, placenta, and aortic smooth muscle.

Molecular Weight: 44 kDa

NCBI Accession: [NP\\_000900](#)

UniProt: [P25929](#)

Pathways: [Negative Regulation of Hormone Secretion, Feeding Behaviour](#)

## Application Details

Application Notes: WB 1:500-1:2000, IHC 1:25-1:100

Restrictions: For Research Use only

## Handling

Format: Liquid

Concentration: 0.3 mg/mL

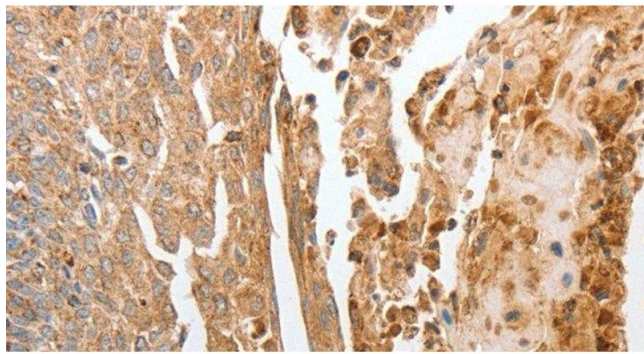
Buffer: PBS with 0.05 % sodium azide and 50 % glycerol, PH7.4

Preservative: Sodium azide

Precaution of Use: This product contains Sodium azide: a POISONOUS AND HAZARDOUS SUBSTANCE which should be handled by trained staff only.

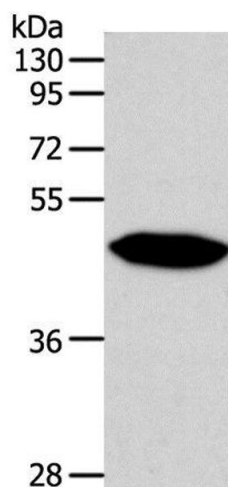
Storage: -20 °C

Storage Comment: Store at -20°C. Avoid freeze / thaw cycles.



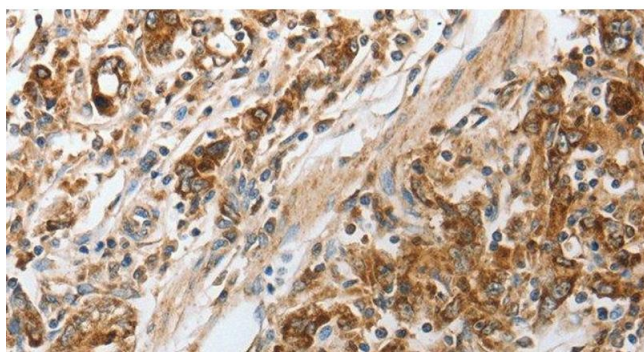
#### Immunohistochemistry (Paraffin-embedded Sections)

**Image 1.** Immunohistochemistry of paraffin-embedded Human cervical cancer using NPY1R Polyclonal Antibody at dilution of 1:30



#### Western Blotting

**Image 2.** Western Blot analysis of Human fetal brain tissue using NPY1R Polyclonal Antibody at dilution of 1:500



#### Immunohistochemistry (Paraffin-embedded Sections)

**Image 3.** Immunohistochemistry of paraffin-embedded Human gastric cancer using NPY1R Polyclonal Antibody at dilution of 1:30