



[Go to Product page](#)

Datasheet for ABIN7242608  
**anti-PAFAH2 antibody**

2 Images

### Overview

Quantity:	200 µL
Target:	PAFAH2
Reactivity:	Human, Mouse, Rat
Host:	Rabbit
Clonality:	Polyclonal
Conjugate:	This PAFAH2 antibody is un-conjugated
Application:	Western Blotting (WB), ELISA, Immunohistochemistry (IHC)

### Product Details

Immunogen:	Synthetic peptide of human PAFAH2
Isotype:	IgG
Characteristics:	Polyclonal Antibody
Purification:	Affinity purification

### Target Details

Target:	PAFAH2
Alternative Name:	PAFAH2 ( <a href="#">PAFAH2 Products</a> )
Background:	This gene encodes platelet-activating factor acetylhydrolase isoform 2, a single-subunit intracellular enzyme that catalyzes the removal of the acetyl group at the SN-2 position of platelet-activating factor (identified as 1-O-alkyl-2-acetyl-sn-glycerol-3-phosphorylcholine). However, this lipase exhibits a broader substrate specificity than simply platelet activating

## Target Details

---

factor. Two other isoforms of intracellular platelet-activating factor acetylhydrolase exist, and both are multi-subunit enzymes. Additionally, there is a single-subunit serum isoform of this enzyme.

Molecular Weight: 44 kDa

NCBI Accession: [NP\\_000428](#)

UniProt: [Q99487](#)

## Application Details

---

Application Notes: WB 1:500-1:2000, IHC 1:100-1:300

Restrictions: For Research Use only

## Handling

---

Format: Liquid

Concentration: 0.1 mg/mL

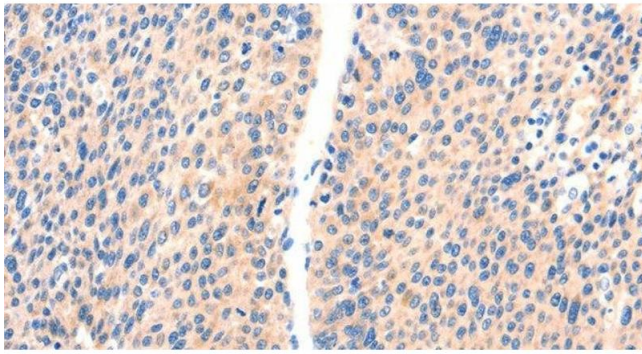
Buffer: PBS with 0.05 % sodium azide and 50 % glycerol, PH7.4

Preservative: Sodium azide

Precaution of Use: This product contains Sodium azide: a POISONOUS AND HAZARDOUS SUBSTANCE which should be handled by trained staff only.

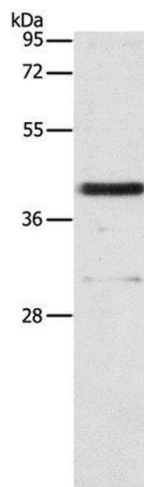
Storage: -20 °C

Storage Comment: Store at -20°C. Avoid freeze / thaw cycles.



### Immunohistochemistry (Paraffin-embedded Sections)

**Image 1.** Immunohistochemistry of paraffin-embedded Human liver cancer using PAFAH2 Polyclonal Antibody at dilution of 1:80



### Western Blotting

**Image 2.** Western Blot analysis of 231 cell using PAFAH2 Polyclonal Antibody at dilution of 1:700