



[Go to Product page](#)

Datasheet for ABIN7242704  
**anti-SPATA20 antibody**

3 Images

Overview

Quantity:	200 µL
Target:	SPATA20
Reactivity:	Human
Host:	Rabbit
Clonality:	Polyclonal
Conjugate:	This SPATA20 antibody is un-conjugated
Application:	Immunohistochemistry (IHC), ELISA, Western Blotting (WB)

Product Details

Immunogen:	Synthetic peptide of human SPATA20
Isotype:	IgG
Characteristics:	Polyclonal Antibody
Purification:	Affinity purification

Target Details

Target:	SPATA20
Alternative Name:	SPATA20 ( <a href="#">SPATA20 Products</a> )
Background:	The protein may play a role in fertility regulation. It were significantly upregulated in individual bile samples from Cholangiocarcinoma patients by Western blotting and Immunohistochemistry, relative to normal tissues. It acts as a potential serum diagnostic biomarker for Cholangiocarcinoma.

## Target Details

Molecular Weight: 88 kDa

NCBI Accession: [NP\\_001245301](#)

UniProt: [Q8TB22](#)

## Application Details

Application Notes: WB 1:500-1:2000, IHC 1:100-1:300

Restrictions: For Research Use only

## Handling

Format: Liquid

Concentration: 0.9 mg/mL

Buffer: PBS with 0.05 % sodium azide and 50 % glycerol, PH7.4

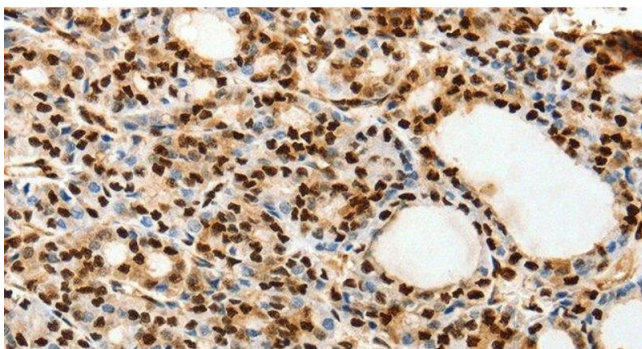
Preservative: Sodium azide

Precaution of Use: This product contains Sodium azide: a POISONOUS AND HAZARDOUS SUBSTANCE which should be handled by trained staff only.

Storage: -20 °C

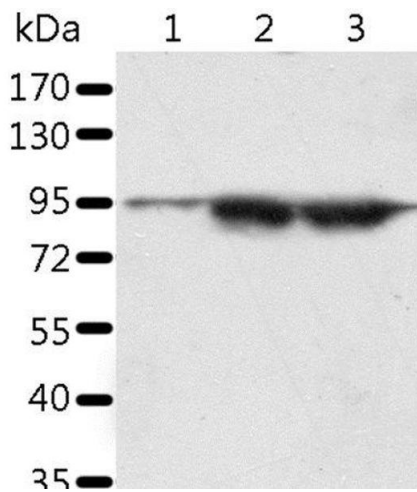
Storage Comment: Store at -20°C. Avoid freeze / thaw cycles.

## Validation report #103937 for Immunofluorescence (IF)



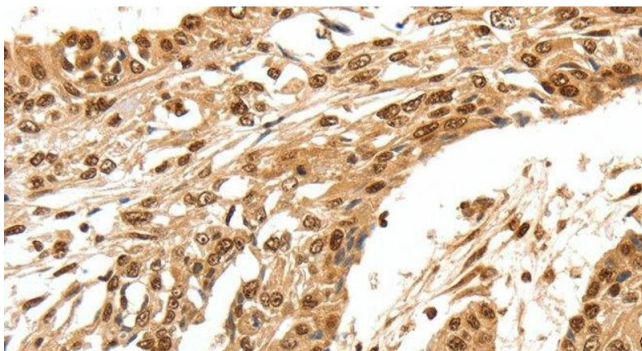
### Immunohistochemistry (Paraffin-embedded Sections)

**Image 1.** Immunohistochemistry of paraffin-embedded Human thyroid cancer using SPATA20 Polyclonal Antibody at dilution of 1:70



### Western Blotting

**Image 2.** Western Blot analysis of A549 and Incap cell, Human seminoma tissue using SPATA20 Polyclonal Antibody at dilution of 1:1000



### Immunohistochemistry (Paraffin-embedded Sections)

**Image 3.** Immunohistochemistry of paraffin-embedded Human esophagus cancer using SPATA20 Polyclonal Antibody at dilution of 1:70