

Datasheet for ABIN7242761

anti-TPM2 antibody

3 Images

[Go to Product page](#)

Overview

Quantity:	200 µL
Target:	TPM2
Reactivity:	Human, Mouse, Rat
Host:	Rabbit
Clonality:	Polyclonal
Conjugate:	This TPM2 antibody is un-conjugated
Application:	Western Blotting (WB), ELISA, Immunohistochemistry (IHC)

Product Details

Immunogen:	Synthetic peptide of human TPM2
Isotype:	IgG
Characteristics:	Polyclonal Antibody
Purification:	Affinity purification

Target Details

Target:	TPM2
Alternative Name:	TPM2 (TPM2 Products)
Background:	This gene encodes beta-tropomyosin, a member of the actin filament binding protein family, and mainly expressed in slow, type 1 muscle fibers. Mutations in this gene can alter the expression of other sarcomeric tropomyosin proteins, and cause cap disease, nemaline myopathy and distal arthrogryposis syndromes. Alternatively spliced transcript variants

Target Details

encoding different isoforms have been found for this gene.

Molecular Weight: 33 kDa

NCBI Accession: [NP_003280](#)

UniProt: [P07951](#)

Application Details

Application Notes: WB 1:1000-1:5000, IHC 1:25-1:100

Restrictions: For Research Use only

Handling

Format: Liquid

Concentration: 0.2 mg/mL

Buffer: PBS with 0.05 % sodium azide and 50 % glycerol, PH7.4

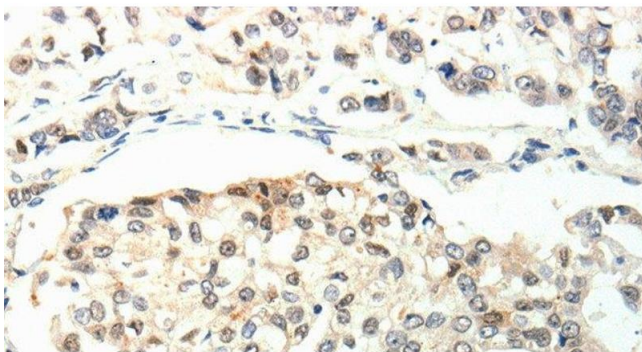
Preservative: Sodium azide

Precaution of Use: This product contains Sodium azide: a POISONOUS AND HAZARDOUS SUBSTANCE which should be handled by trained staff only.

Storage: -20 °C

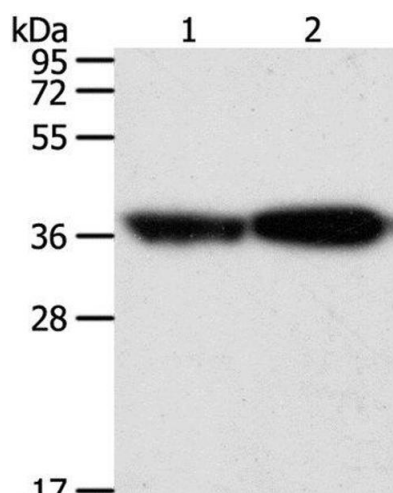
Storage Comment: Store at -20°C. Avoid freeze / thaw cycles.

Images



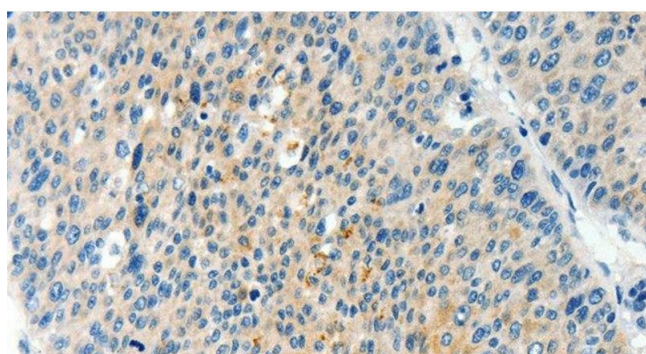
Immunohistochemistry (Paraffin-embedded Sections)

Image 1. Immunohistochemistry of paraffin-embedded Human breast cancer using TPM2 Polyclonal Antibody at dilution of 1:60



Western Blotting

Image 2. Western Blot analysis of Human leiomyosarcoma and Mouse testis tissue using TPM2 Polyclonal Antibody at dilution of 1:1000



Immunohistochemistry (Paraffin-embedded Sections)

Image 3. Immunohistochemistry of paraffin-embedded Human liver cancer using TPM2 Polyclonal Antibody at dilution of 1:60