



[Go to Product page](#)

Datasheet for ABIN7242791

anti-A1BG antibody

1 Image

Overview

Quantity:	200 µL
Target:	A1BG
Reactivity:	Human
Host:	Rabbit
Clonality:	Polyclonal
Conjugate:	This A1BG antibody is un-conjugated
Application:	Western Blotting (WB), ELISA

Product Details

Immunogen:	Synthetic peptide of human A1BG
Isotype:	IgG
Characteristics:	Polyclonal Antibody
Purification:	Affinity purification

Target Details

Target:	A1BG
Alternative Name:	A1BG (A1BG Products)
Background:	Alpha-1-B glycoprotein is a protein in humans that is encoded by the A1BG gene. The protein encoded by this gene is a plasma glycoprotein of unknown function. The protein shows sequence similarity to the variable regions of some immunoglobulin supergene family member proteins.

Target Details

Molecular Weight:	54 kDa
NCBI Accession:	NP_570602
UniProt:	P04217

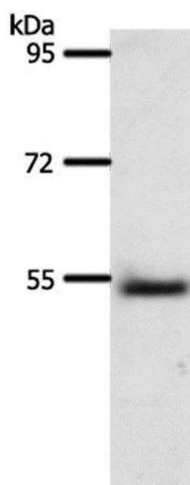
Application Details

Application Notes:	WB 1:200-1:1000
Restrictions:	For Research Use only

Handling

Format:	Liquid
Concentration:	0.5 mg/mL
Buffer:	PBS with 0.05 % sodium azide and 50 % glycerol, PH7.4
Preservative:	Sodium azide
Precaution of Use:	This product contains Sodium azide: a POISONOUS AND HAZARDOUS SUBSTANCE which should be handled by trained staff only.
Storage:	-20 °C
Storage Comment:	Store at -20°C. Avoid freeze / thaw cycles.

Images



Western Blotting

Image 1. Western Blot analysis of Human liver cancer tissue using A1BG Polyclonal Antibody at dilution of 1:500