

Datasheet for ABIN724280
anti-Amylin/DAP antibody[Go to Product page](#)

1 Image

Overview

Quantity:	100 µL
Target:	Amylin/DAP (IAPP)
Reactivity:	Human, Rat, Mouse
Host:	Rabbit
Clonality:	Polyclonal
Conjugate:	This Amylin/DAP antibody is un-conjugated
Application:	Western Blotting (WB), Immunohistochemistry (Paraffin-embedded Sections) (IHC (p)), Immunofluorescence (Paraffin-embedded Sections) (IF (p))

Product Details

Immunogen:	KLH conjugated synthetic peptide derived from human Amylin
Isotype:	IgG
Cross-Reactivity:	Human, Mouse, Rat
Purification:	Purified by Protein A.

Target Details

Target:	Amylin/DAP (IAPP)
Alternative Name:	Amylin (IAPP Products)
Background:	Synonyms: Islet amyloid polypeptide, IAPP, DAP, Diabetes associated peptide, IAP, Insulinoma amyloid peptide. Background: Amylin is commonly found in pancreatic islets of patients suffering diabetes

Target Details

mellitus type II, or harboring an insulinoma. While the association of amylin with the development of type II diabetes has been known for some time, a direct causative role for amylin has been harder to establish. Recent results suggest that amylin, like the related beta amyloid (A β) associated with Alzheimer's disease, can induce apoptotic cell death in particular cultured cells, an effect that may be relevant to the development of type II diabetes.

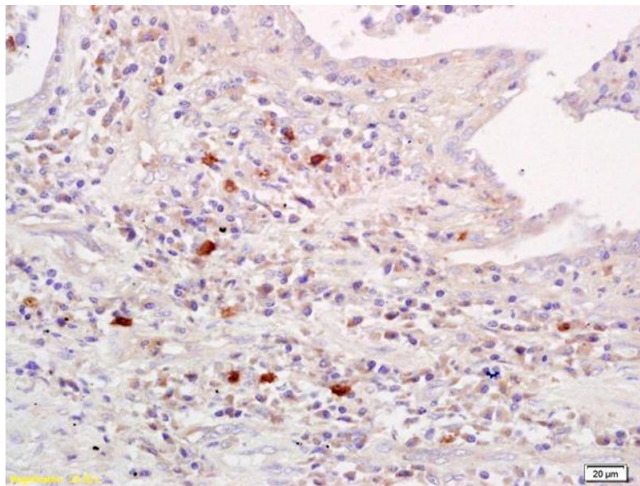
Gene ID:	3375
Pathways:	Hormone Activity , Feeding Behaviour

Application Details

Application Notes:	WB: (1:100-1000), IHC-P: (1:100-500), IF(IHC-P): (1:50-200) Optimal working dilution should be determined by the investigator.
Restrictions:	For Research Use only

Handling

Format:	Liquid
Concentration:	1 μ g/ μ L
Buffer:	Aqueous buffered solution containing 1 % BSA, 50 % glycerol and 0.09 % sodium azide.
Preservative:	Sodium azide
Precaution of Use:	This product contains Sodium azide: a POISONOUS AND HAZARDOUS SUBSTANCE which should be handled by trained staff only.
Storage:	-20 °C
Storage Comment:	Store at -20°C for 12 months.
Expiry Date:	12 months



Immunohistochemistry

Image 1. Formalin-fixed and paraffin embedded human lung carcinoma labeled with Anti-Amylin Polyclonal Antibody, Unconjugated (ABIN724280) at 1:200 followed by conjugation to the secondary antibody and DAB staining.