

Datasheet for ABIN7242845  
**anti-alpha 2 Antiplasmin antibody**[Go to Product page](#)

## 1 Image

## Overview

Quantity:	200 µL
Target:	alpha 2 Antiplasmin (SERPINF2)
Reactivity:	Human
Host:	Rabbit
Clonality:	Polyclonal
Conjugate:	This alpha 2 Antiplasmin antibody is un-conjugated
Application:	Immunohistochemistry (IHC), ELISA

## Product Details

Immunogen:	Synthetic peptide of human SERPINF2
Isotype:	IgG
Characteristics:	Polyclonal Antibody
Purification:	Affinity purification

## Target Details

Target:	alpha 2 Antiplasmin (SERPINF2)
Alternative Name:	SERPINF2 ( <a href="#">SERPINF2 Products</a> )
Background:	<p>This gene encodes a member of the serpin family of serine protease inhibitors. The protein is a major inhibitor of plasmin, which degrades fibrin and various other proteins. Consequently, the proper function of this gene has a major role in regulating the blood clotting pathway.</p> <p>Mutations in this gene result in alpha-2-plasmin inhibitor deficiency, which is characterized by</p>

## Target Details

severe hemorrhagic diathesis. Multiple transcript variants encoding different isoforms have been found for this gene.

NCBI Accession: [NP\\_000925](#)

UniProt: [P08697](#)

Pathways: [Regulation of Systemic Arterial Blood Pressure by Hormones](#)

## Application Details

Application Notes: IHC 1:50-1:200

Restrictions: For Research Use only

## Handling

Format: Liquid

Concentration: 0.6 mg/mL

Buffer: PBS with 0.05 % sodium azide and 50 % glycerol, PH7.4

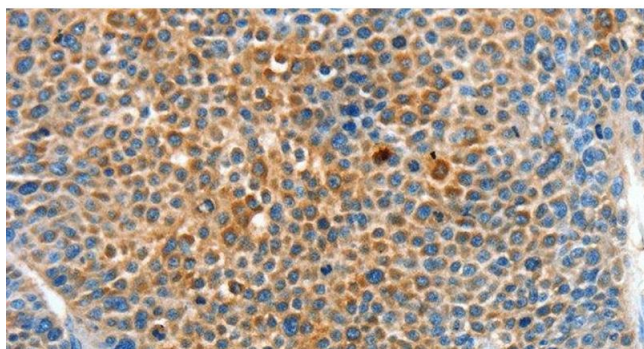
Preservative: Sodium azide

Precaution of Use: This product contains Sodium azide: a POISONOUS AND HAZARDOUS SUBSTANCE which should be handled by trained staff only.

Storage: -20 °C

Storage Comment: Store at -20°C. Avoid freeze / thaw cycles.

## Images



### Immunohistochemistry (Paraffin-embedded Sections)

**Image 1.** Immunohistochemistry of paraffin-embedded Human liver cancer tissue using SERPINF2 Polyclonal Antibody at dilution 1:50