



[Go to Product page](#)

Datasheet for ABIN7242854

## anti-Angiotensin I Converting Enzyme 1 antibody

### 3 Images

#### Overview

Quantity:	200 µL
Target:	Angiotensin I Converting Enzyme 1 (ACE)
Reactivity:	Human, Mouse, Rat
Host:	Rabbit
Clonality:	Polyclonal
Conjugate:	This Angiotensin I Converting Enzyme 1 antibody is un-conjugated
Application:	Western Blotting (WB), ELISA, Immunohistochemistry (IHC)

#### Product Details

Immunogen:	Synthetic peptide of human ACE
Isotype:	IgG
Characteristics:	Polyclonal Antibody
Purification:	Affinity purification

#### Target Details

Target:	Angiotensin I Converting Enzyme 1 (ACE)
Alternative Name:	ACE1 ( <a href="#">ACE Products</a> )
Background:	This gene encodes an enzyme involved in catalyzing the conversion of angiotensin I into a physiologically active peptide angiotensin II. Angiotensin II is a potent vasopressor and aldosterone-stimulating peptide that controls blood pressure and fluid-electrolyte balance. This enzyme plays a key role in the renin-angiotensin system. Many studies have associated the

## Target Details

---

presence or absence of a 287 bp Alu repeat element in this gene with the levels of circulating enzyme or cardiovascular pathophysiologies. Multiple alternatively spliced transcript variants encoding different isoforms have been identified, and two most abundant spliced variants encode the somatic form and the testicular form, respectively, that are equally active.

Molecular Weight: 150 kDa

NCBI Accession: [NP\\_000780](#)

UniProt: [P12821](#)

Pathways: [ACE Inhibitor Pathway](#), [Peptide Hormone Metabolism](#), [Regulation of Systemic Arterial Blood Pressure by Hormones](#), [Feeding Behaviour](#), [Smooth Muscle Cell Migration](#)

## Application Details

---

Application Notes: WB 1:200-1:1000, IHC 1:100-1:300

Restrictions: For Research Use only

## Handling

---

Format: Liquid

Concentration: 0.5 mg/mL

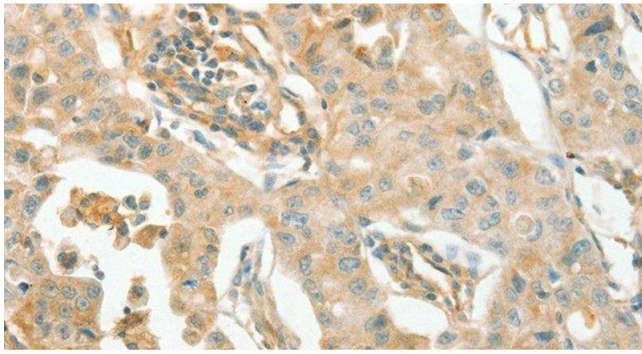
Buffer: PBS with 0.05 % sodium azide and 50 % glycerol, PH7.4

Preservative: Sodium azide

Precaution of Use: This product contains Sodium azide: a POISONOUS AND HAZARDOUS SUBSTANCE which should be handled by trained staff only.

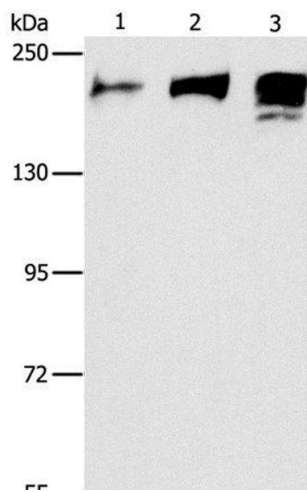
Storage: -20 °C

Storage Comment: Store at -20°C. Avoid freeze / thaw cycles.



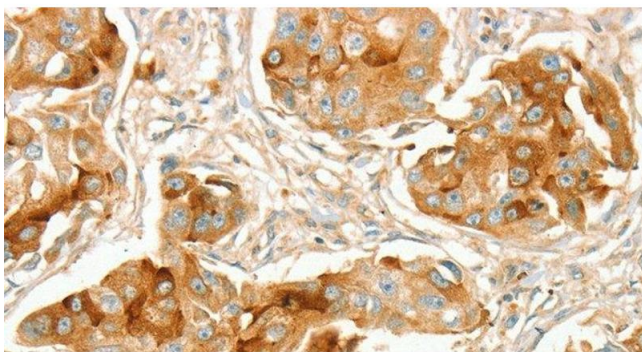
### Immunohistochemistry (Paraffin-embedded Sections)

**Image 1.** Immunohistochemistry of paraffin-embedded Human lung cancer using ACE1 Polyclonal Antibody at dilution of 1:70



### Western Blotting

**Image 2.** Western Blot analysis of Human ileum adenocarcinoma tissue, Human testis and prostate tissue using ACE1 Polyclonal Antibody at dilution of 1:240



### Immunohistochemistry (Paraffin-embedded Sections)

**Image 3.** Immunohistochemistry of paraffin-embedded Human breast cancer using ACE1 Polyclonal Antibody at dilution of 1:70