

Datasheet for ABIN7242866
anti-APOBEC3C antibody[Go to Product page](#)

1 Image

Overview

Quantity:	200 µL
Target:	APOBEC3C
Reactivity:	Human
Host:	Rabbit
Clonality:	Polyclonal
Conjugate:	This APOBEC3C antibody is un-conjugated
Application:	Western Blotting (WB), ELISA

Product Details

Immunogen:	Synthetic peptide of human APOBEC3C
Isotype:	IgG
Characteristics:	Polyclonal Antibody
Purification:	Affinity purification

Target Details

Target:	APOBEC3C
Alternative Name:	APOBEC3C (APOBEC3C Products)
Background:	<p>This gene is a member of the cytidine deaminase gene family. It is one of seven related genes or pseudogenes found in a cluster thought to result from gene duplication, on chromosome 22. Members of the cluster encode proteins that are structurally and functionally related to the C to U RNA-editing cytidine deaminase APOBEC1. It is thought that the proteins may be RNA editing</p>

Target Details

enzymes and have roles in growth or cell cycle control.

Molecular Weight:	23 kDa
NCBI Accession:	NP_055323
UniProt:	Q9NRW3

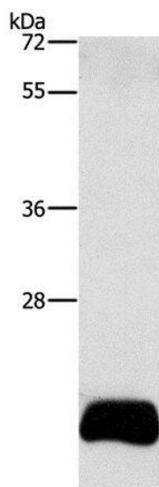
Application Details

Application Notes:	WB 1:500-1:2000
Restrictions:	For Research Use only

Handling

Format:	Liquid
Concentration:	0.3 mg/mL
Buffer:	PBS with 0.05 % sodium azide and 50 % glycerol, PH7.4
Preservative:	Sodium azide
Precaution of Use:	This product contains Sodium azide: a POISONOUS AND HAZARDOUS SUBSTANCE which should be handled by trained staff only.
Storage:	-20 °C
Storage Comment:	Store at -20°C. Avoid freeze / thaw cycles.

Images



Western Blotting

Image 1. Western Blot analysis of PC3 cell using APOBEC3C Polyclonal Antibody at dilution of 1:420