

Datasheet for ABIN7242887

anti-AMZ1 antibody

2 Images

[Go to Product page](#)

Overview

Quantity:	200 µL
Target:	AMZ1
Reactivity:	Human
Host:	Rabbit
Clonality:	Polyclonal
Conjugate:	This AMZ1 antibody is un-conjugated
Application:	Western Blotting (WB), ELISA, Immunohistochemistry (IHC)

Product Details

Immunogen:	Synthetic peptide of human AMZ1
Isotype:	IgG
Characteristics:	Polyclonal Antibody
Purification:	Affinity purification

Target Details

Target:	AMZ1
Alternative Name:	AMZ1 (AMZ1 Products)
Background:	AMZ1 shares sequence similarity with archaeal metalloproteases called archaemetzincins, but it appears to act predominantly as a basic aminopeptidase. Inhibited by the general metalloprotease inhibitors o-phenanthroline and batimastat. Also significantly inhibited by amastatin, which is an inhibitor of aminopeptidases. Not inhibited by 4-(2-aminoethyl)-

Target Details

benzenesulfonyl fluoride, E-64, and TIMPS (tissue inhibitors of metalloproteinases), which are inhibitors of serine, cysteine, and matrix metalloproteases, respectively.

Molecular Weight: 55 kDa

NCBI Accession: [NP_597720](#)

UniProt: [Q400G9](#)

Application Details

Application Notes: WB 1:500-1:2000, IHC 1:50-1:200

Restrictions: For Research Use only

Handling

Format: Liquid

Concentration: 1.4 mg/mL

Buffer: PBS with 0.05 % sodium azide and 50 % glycerol, PH7.4

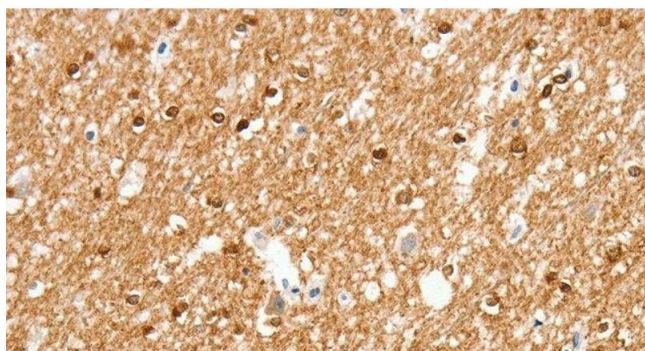
Preservative: Sodium azide

Precaution of Use: This product contains Sodium azide: a POISONOUS AND HAZARDOUS SUBSTANCE which should be handled by trained staff only.

Storage: -20 °C

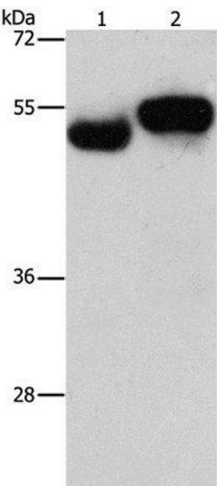
Storage Comment: Store at -20°C. Avoid freeze / thaw cycles.

Images



Immunohistochemistry (Paraffin-embedded Sections)

Image 1. Immunohistochemistry of paraffin-embedded Human brain using AMZ1 Polyclonal Antibody at dilution of 1:80



Western Blotting

Image 2. Western Blot analysis of Human fetal brain and liver tissue using AMZ1 Polyclonal Antibody at dilution of 1:1000