

Datasheet for ABIN7242956

anti-SPR antibody[Go to Product page](#)**1** Image

Overview

Quantity:	200 µL
Target:	SPR
Reactivity:	Human, Mouse
Host:	Rabbit
Clonality:	Polyclonal
Conjugate:	This SPR antibody is un-conjugated
Application:	Western Blotting (WB), ELISA

Product Details

Immunogen:	Synthetic peptide of human SPR
Isotype:	IgG
Characteristics:	Polyclonal Antibody
Purification:	Affinity purification

Target Details

Target:	SPR
Alternative Name:	SPR (SPR Products)
Background:	<p>This gene encodes an aldo-keto reductase that catalyzes the NADPH-dependent reduction of pteridine derivatives and is important in the biosynthesis of tetrahydrobiopterin (BH4).</p> <p>Mutations in this gene result in DOPA-responsive dystonia due to sepiaterin reductase deficiency. A pseudogene has been identified on chromosome 1.</p>

Target Details

Molecular Weight:	28 kDa
NCBI Accession:	NP_003115
UniProt:	P35270
Pathways:	Regulation of Systemic Arterial Blood Pressure by Hormones, Feeding Behaviour, Smooth Muscle Cell Migration

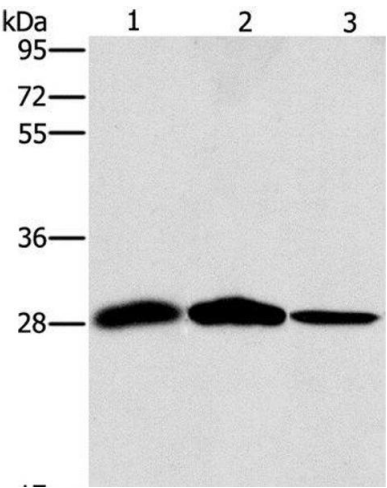
Application Details

Application Notes:	WB 1:1000-1:5000
Restrictions:	For Research Use only

Handling

Format:	Liquid
Concentration:	0.3 mg/mL
Buffer:	PBS with 0.05 % sodium azide and 50 % glycerol, PH7.4
Preservative:	Sodium azide
Precaution of Use:	This product contains Sodium azide: a POISONOUS AND HAZARDOUS SUBSTANCE which should be handled by trained staff only.
Storage:	-20 °C
Storage Comment:	Store at -20°C. Avoid freeze / thaw cycles.

Images



Western Blotting

Image 1. Western Blot analysis of Mouse liver and Human chromaffin cell tumor tissue, hepG2 cell using SPR Polyclonal Antibody at dilution of 1:1500