

Datasheet for ABIN7242971

anti-ASCC2 antibody[Go to Product page](#)**1** Image

Overview

Quantity:	200 µL
Target:	ASCC2
Reactivity:	Human, Mouse
Host:	Rabbit
Clonality:	Polyclonal
Conjugate:	This ASCC2 antibody is un-conjugated
Application:	Western Blotting (WB), ELISA

Product Details

Immunogen:	Synthetic peptide of human ASCC2
Isotype:	IgG
Characteristics:	Polyclonal Antibody
Purification:	Affinity purification

Target Details

Target:	ASCC2
Alternative Name:	ASCC2 (ASCC2 Products)
Background:	ASCC2 (activating signal cointegrator 1 complex subunit 2), also known as ASC1P100, is a 757 amino acid protein that is ubiquitously expressed and contains one CUE domain. The gene encoding ASCC2 maps to human chromosome 22, which houses over 500 genes and is the second smallest human chromosome. Mutations in several of the genes that map to

Target Details

chromosome 22 are involved in the development of Phelan-McDermid syndrome, Neurofibromatosis type 2, autism and schizophrenia. Additionally, translocations between chromosomes 9 and 22 may lead to the formation of the Philadelphia Chromosome and the subsequent production of the novel fusion protein BCR-Abl, a potent cell proliferation activator found in several types of leukemias.

Molecular Weight: 86 kDa

NCBI Accession: [NP_115580](#)

UniProt: [Q9H1I8](#)

Application Details

Application Notes: WB 1:500-1:2000

Restrictions: For Research Use only

Handling

Format: Liquid

Concentration: 0.7 mg/mL

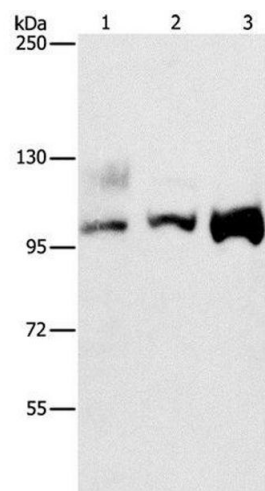
Buffer: PBS with 0.05 % sodium azide and 50 % glycerol, PH7.4

Preservative: Sodium azide

Precaution of Use: This product contains Sodium azide: a POISONOUS AND HAZARDOUS SUBSTANCE which should be handled by trained staff only.

Storage: -20 °C

Storage Comment: Store at -20°C. Avoid freeze / thaw cycles.



Western Blotting

Image 1. Western Blot analysis of A431, 293T and hela cell using ASCC2 Polyclonal Antibody at dilution of 1:500