

Datasheet for ABIN7242986  
**anti-Smooth Muscle Actin antibody**

## 3 Images

[Go to Product page](#)

## Overview

Quantity:	200 µL
Target:	Smooth Muscle Actin (ACTA2)
Reactivity:	Human, Rat, Mouse
Host:	Rabbit
Clonality:	Polyclonal
Application:	Western Blotting (WB), Immunohistochemistry (IHC), ELISA

## Product Details

Immunogen:	Synthetic peptide of human ACTA2
Isotype:	IgG
Characteristics:	Polyclonal Antibody
Purification:	Affinity purification

## Target Details

Target:	Smooth Muscle Actin (ACTA2)
Alternative Name:	ACTA2 ( <a href="#">ACTA2 Products</a> )
Background:	The protein encoded by this gene belongs to the actin family of proteins, which are highly conserved proteins that play a role in cell motility, structure and integrity. Alpha, beta and gamma actin isoforms have been identified, with alpha actins being a major constituent of the contractile apparatus, while beta and gamma actins are involved in the regulation of cell motility. This actin is an alpha actin that is found in skeletal muscle. Defects in this gene cause

Target Details

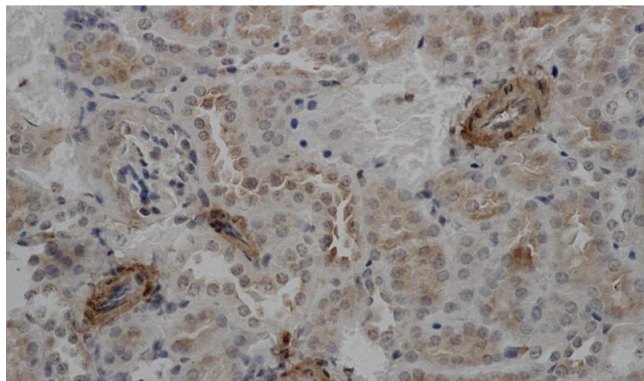
	aortic aneurysm familial thoracic type 6. Multiple alternatively spliced variants, encoding the same protein, have been identified.
Molecular Weight:	42 kDa
NCBI Accession:	<a href="#">NP_001135417</a>
UniProt:	<a href="#">P62736</a>
Pathways:	<a href="#">Myometrial Relaxation and Contraction, Skeletal Muscle Fiber Development</a>

Application Details

Application Notes:	WB 1:1000-1:5000, IHC 1:50-1:200
Restrictions:	For Research Use only

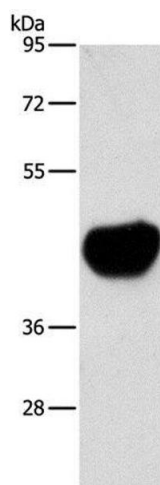
Handling

Format:	Liquid
Concentration:	0.4 mg/mL
Buffer:	PBS with 0.05 % sodium azide and 50 % glycerol, PH7.4
Preservative:	Sodium azide
Precaution of Use:	This product contains Sodium azide: a POISONOUS AND HAZARDOUS SUBSTANCE which should be handled by trained staff only.
Storage:	-20 °C
Storage Comment:	Store at -20°C. Avoid freeze / thaw cycles.



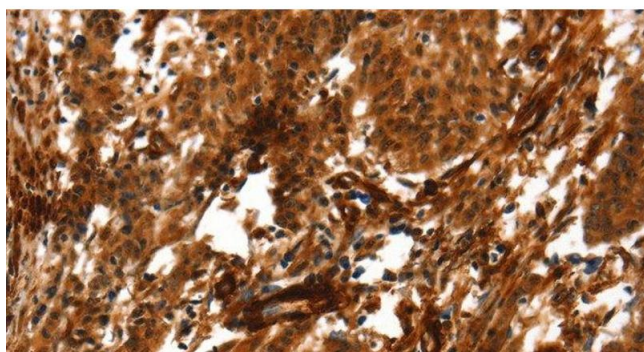
#### Immunohistochemistry (Paraffin-embedded Sections)

**Image 1.** Immunohistochemistry of paraffin-embedded Mouse kidney using ACTA2 Polyclonal Antibody at dilution of 1:50



#### Western Blotting

**Image 2.** Western Blot analysis of Mouse heart tissue using ACTA2 Polyclonal Antibody at dilution of 1:800



#### Immunohistochemistry (Paraffin-embedded Sections)

**Image 3.** Immunohistochemistry of paraffin-embedded Human gastric cancer using ACTA2 Polyclonal Antibody at dilution of 1:40