

Datasheet for ABIN7243079

**anti-NCAPG2 antibody****2** Images[Go to Product page](#)

## Overview

Quantity:	200 µL
Target:	NCAPG2
Reactivity:	Human
Host:	Rabbit
Clonality:	Polyclonal
Conjugate:	This NCAPG2 antibody is un-conjugated
Application:	ELISA, Immunohistochemistry (IHC)

## Product Details

Immunogen:	Synthetic peptide of human NCAPG2
Isotype:	IgG
Characteristics:	Polyclonal Antibody
Purification:	Affinity purification

## Target Details

Target:	NCAPG2
Alternative Name:	NCAPG2 ( <a href="#">NCAPG2 Products</a> )
Background:	This gene encodes a protein that belongs to the Condensin2nSMC family of proteins. The encoded protein is a regulatory subunit of the condensin II complex which, along with the condensin I complex, plays a role in chromosome assembly and segregation during mitosis. A similar protein in mouse is required for early development of the embryo. Alternate splicing

## Target Details

results in multiple transcript variants.

NCBI Accession: [NP\\_060230](#)

UniProt: [Q86XI2](#)

## Application Details

Application Notes: IHC 1:50-1:200

Restrictions: For Research Use only

## Handling

Format: Liquid

Concentration: 0.8 mg/mL

Buffer: PBS with 0.05 % sodium azide and 50 % glycerol, PH7.4

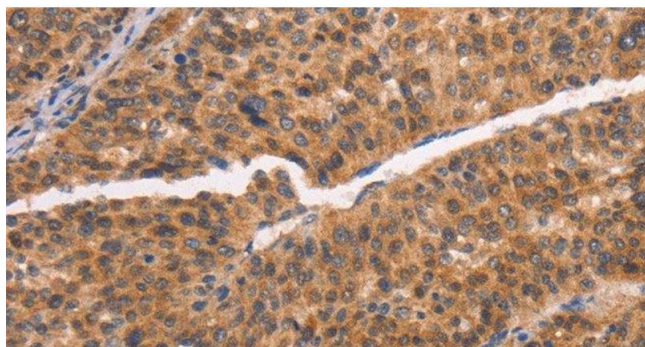
Preservative: Sodium azide

Precaution of Use: This product contains Sodium azide: a POISONOUS AND HAZARDOUS SUBSTANCE which should be handled by trained staff only.

Storage: -20 °C

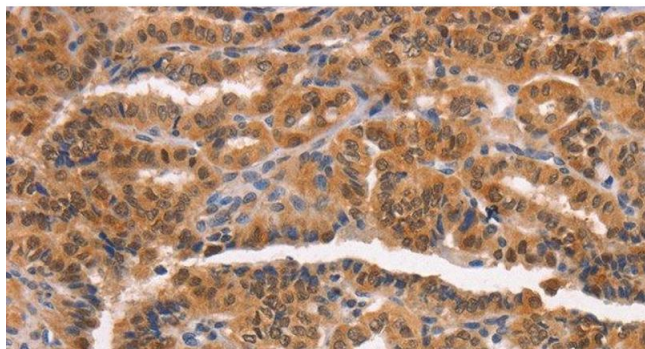
Storage Comment: Store at -20°C. Avoid freeze / thaw cycles.

## Images



### Immunohistochemistry (Paraffin-embedded Sections)

**Image 1.** Immunohistochemistry of paraffin-embedded Human liver cancer tissue using NCAPG2 Polyclonal Antibody at dilution 1:50



#### Immunohistochemistry (Paraffin-embedded Sections)

**Image 2.** Immunohistochemistry of paraffin-embedded Human thyroid cancer tissue using NCAPG2 Polyclonal Antibody at dilution 1:50