



[Go to Product page](#)

Datasheet for ABIN724310

anti-APAF1 antibody (AA 13-80)

3 Images

Overview

Quantity:	100 µL
Target:	APAF1
Binding Specificity:	AA 13-80
Reactivity:	Human, Mouse, Rat
Host:	Rabbit
Clonality:	Polyclonal
Conjugate:	This APAF1 antibody is un-conjugated
Application:	ELISA, Immunohistochemistry (Paraffin-embedded Sections) (IHC (p)), Immunofluorescence (Cultured Cells) (IF (cc)), Immunofluorescence (Paraffin-embedded Sections) (IF (p)), Flow Cytometry (FACS), Immunohistochemistry (Frozen Sections) (IHC (fro))

Product Details

Immunogen:	KLH conjugated synthetic peptide derived from human Apaf-1
Isotype:	IgG
Cross-Reactivity:	Human, Mouse, Rat
Predicted Reactivity:	Dog,Cow,Horse,Chicken
Purification:	Purified by Protein A.

Target Details

Target:	APAF1
---------	-------

Target Details

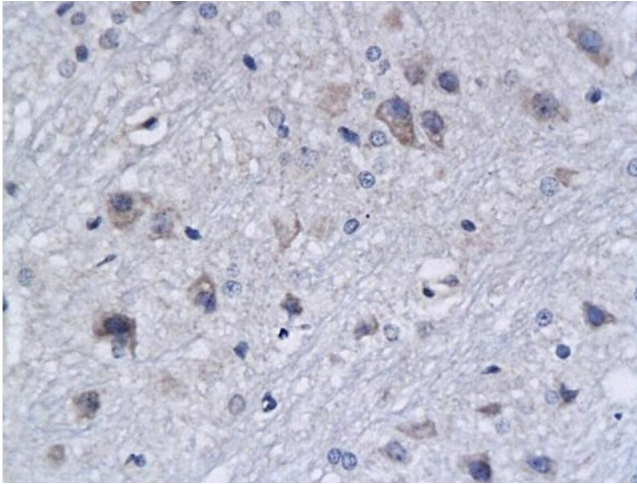
Alternative Name:	APAF1NT (APAF1 Products)
Background:	Synonyms: CED4, APAF-1, Apoptotic protease-activating factor 1, APAF1, KIAA0413 Background: Oligomeric Apaf-1 mediates the cytochrome c-dependent autocatalytic activation of pro-caspase-9 (Apaf-3), leading to the activation of caspase-3 and apoptosis. This activation requires ATP. Isoform 6 is less effective in inducing apoptosis.
Gene ID:	317
UniProt:	O14727
Pathways:	p53 Signaling , Apoptosis , Caspase Cascade in Apoptosis , Tube Formation , Positive Regulation of Endopeptidase Activity

Application Details

Application Notes:	ELISA 1:500-1000 FCM 1:20-100 IHC-P 1:200-400 IHC-F 1:100-500 IF(IHC-P) 1:50-200 IF(IHC-F) 1:50-200 IF(ICC) 1:50-200
Restrictions:	For Research Use only

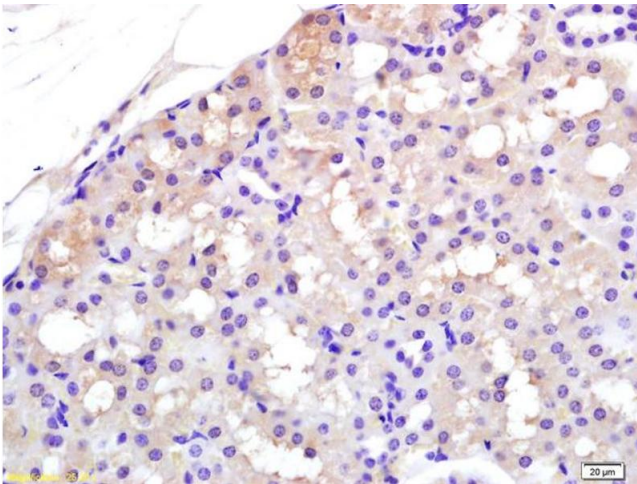
Handling

Format:	Liquid
Concentration:	1 µg/µL
Buffer:	0.01M TBS(pH 7.4) with 1 % BSA, 0.02 % Proclin300 and 50 % Glycerol.
Preservative:	ProClin
Precaution of Use:	This product contains ProClin: a POISONOUS AND HAZARDOUS SUBSTANCE, which should be handled by trained staff only.
Storage:	4 °C, -20 °C
Storage Comment:	Shipped at 4°C. Store at -20°C for one year. Avoid repeated freeze/thaw cycles.
Expiry Date:	12 months



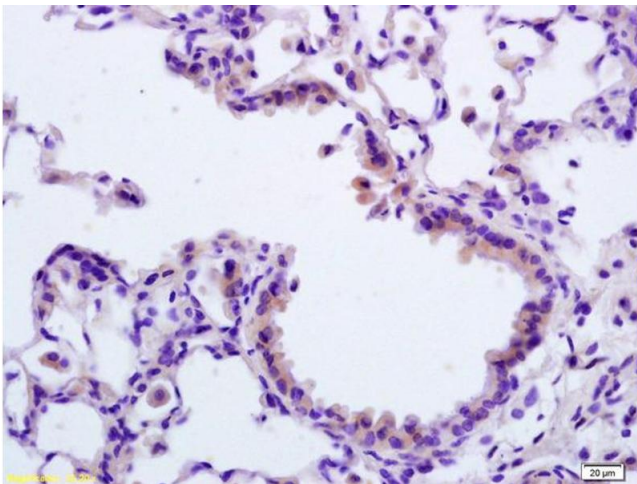
Immunohistochemistry

Image 1. Formalin-fixed and paraffin embedded rat brain labeled with Anti-APAF1(NT) Polyclonal Antibody, Unconjugated (ABIN724310) followed by conjugation to the secondary antibody and DAB staining



Immunohistochemistry

Image 2. Formalin-fixed and paraffin embedded rat kidney labeled with Rabbit Anti APAF1(NT) Polyclonal Antibody, Unconjugated (ABIN724310) at 1:200 followed by conjugation to the secondary antibody and DAB staining



Immunohistochemistry

Image 3. Formalin-fixed and paraffin embedded rat lung labeled with Rabbit Anti APAF1(NT) Polyclonal Antibody, Unconjugated (ABIN724310) at 1:200 followed by conjugation to the secondary antibody and DAB staining