

Datasheet for ABIN7243172

anti-CHRNA2 antibody**3** Images[Go to Product page](#)

Overview

Quantity:	200 µL
Target:	CHRNA2
Reactivity:	Human
Host:	Rabbit
Clonality:	Polyclonal
Conjugate:	This CHRNA2 antibody is un-conjugated
Application:	Western Blotting (WB), ELISA, Immunohistochemistry (IHC)

Product Details

Immunogen:	Synthetic peptide of human CHRNA2
Isotype:	IgG
Characteristics:	Polyclonal Antibody
Purification:	Affinity purification

Target Details

Target:	CHRNA2
Alternative Name:	CHRNA2 (CHRNA2 Products)
Background:	Nicotinic acetylcholine receptors (nAChRs) are ligand-gated ion channels formed by a pentameric arrangement of alpha and beta subunits to create distinct muscle and neuronal receptors. Neuronal receptors are found throughout the peripheral and central nervous system where they are involved in fast synaptic transmission. This gene encodes an alpha subunit that

Target Details

is widely expressed in the brain. The proposed structure for nAChR subunits is a conserved N-terminal extracellular domain followed by three conserved transmembrane domains, a variable cytoplasmic loop, a fourth conserved transmembrane domain, and a short C-terminal extracellular region. Mutations in this gene cause autosomal dominant nocturnal frontal lobe epilepsy type 4. Single nucleotide polymorphisms (SNPs) in this gene have been associated with nicotine dependence.

Molecular Weight: 60 kDa

NCBI Accession: [NP_000733](#)

UniProt: [Q15822](#)

Application Details

Application Notes: WB 1:500-1:2000, IHC 1:25-1:100

Restrictions: For Research Use only

Handling

Format: Liquid

Concentration: 0.5 mg/mL

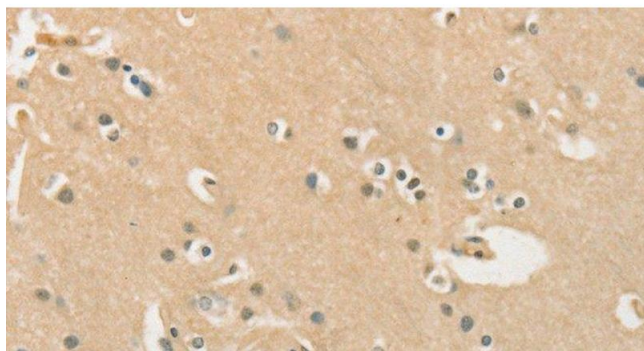
Buffer: PBS with 0.05 % sodium azide and 50 % glycerol, PH7.4

Preservative: Sodium azide

Precaution of Use: This product contains Sodium azide: a POISONOUS AND HAZARDOUS SUBSTANCE which should be handled by trained staff only.

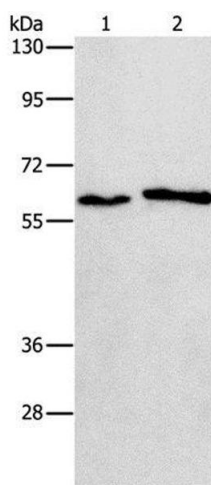
Storage: -20 °C

Storage Comment: Store at -20°C. Avoid freeze / thaw cycles.



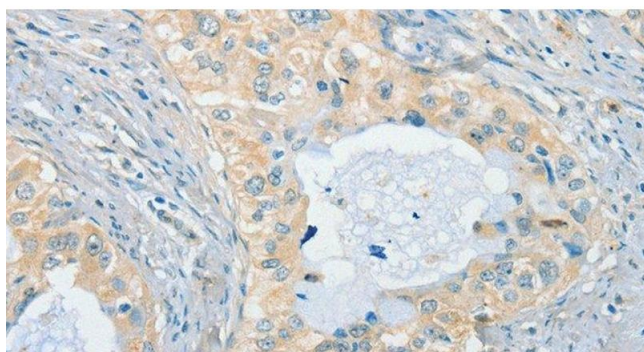
Immunohistochemistry (Paraffin-embedded Sections)

Image 1. Immunohistochemistry of paraffin-embedded Human brain using CHRNA2 Polyclonal Antibody at dilution of 1:40



Western Blotting

Image 2. Western Blot analysis of A172 and A549 cell using CHRNA2 Polyclonal Antibody at dilution of 1:950



Immunohistochemistry (Paraffin-embedded Sections)

Image 3. Immunohistochemistry of paraffin-embedded Human cervical cancer using CHRNA2 Polyclonal Antibody at dilution of 1:40