

Datasheet for ABIN7243178
anti-TSPY-Like 2 antibody[Go to Product page](#)

1 Image

Overview

Quantity:	200 µL
Target:	TSPY-Like 2 (TSPYL2)
Reactivity:	Human
Host:	Rabbit
Clonality:	Polyclonal
Conjugate:	This TSPY-Like 2 antibody is un-conjugated
Application:	Western Blotting (WB), ELISA

Product Details

Immunogen:	Synthetic peptide of human TSPYL2
Isotype:	IgG
Characteristics:	Polyclonal Antibody
Purification:	Affinity purification

Target Details

Target:	TSPY-Like 2 (TSPYL2)
Alternative Name:	TSPYL2 (TSPYL2 Products)
Background:	This gene encodes a member of the testis-specific protein Y-encoded, TSPY-like/SET/nucleosome assembly protein-1 superfamily. The encoded protein is localized to the nucleolus where it functions in chromatin remodeling and as an inhibitor of cell-cycle progression. This protein may play a role in the suppression of tumor growth.

Target Details

Molecular Weight:	79 kDa
NCBI Accession:	NP_071400
UniProt:	Q9H2G4
Pathways:	ER-Nucleus Signaling

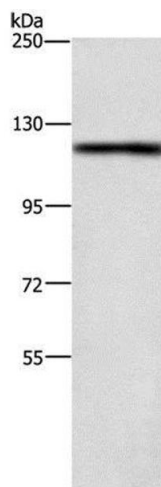
Application Details

Application Notes:	WB 1:500-1:2000
Restrictions:	For Research Use only

Handling

Format:	Liquid
Concentration:	0.4 mg/mL
Buffer:	PBS with 0.05 % sodium azide and 50 % glycerol, PH7.4
Preservative:	Sodium azide
Precaution of Use:	This product contains Sodium azide: a POISONOUS AND HAZARDOUS SUBSTANCE which should be handled by trained staff only.
Storage:	-20 °C
Storage Comment:	Store at -20°C. Avoid freeze / thaw cycles.

Images



Western Blotting

Image 1. Western Blot analysis of 231 cell using TSPYL2 Polyclonal Antibody at dilution of 1:400