

Datasheet for ABIN7243199 **anti-PLA2G4B antibody**



[Go to Product page](#)

1 Image

Overview

Quantity:	200 µL
Target:	PLA2G4B
Reactivity:	Human, Mouse
Host:	Rabbit
Clonality:	Polyclonal
Conjugate:	This PLA2G4B antibody is un-conjugated
Application:	Western Blotting (WB), ELISA

Product Details

Immunogen:	Synthetic peptide of human PLA2G4B
Isotype:	IgG
Characteristics:	Polyclonal Antibody
Purification:	Affinity purification

Target Details

Target:	PLA2G4B
Alternative Name:	PLA2G4B (PLA2G4B Products)
Background:	This gene encodes a member of the cytosolic phospholipase A2 protein family. Phospholipase A2 enzymes hydrolyze the sn-2 bond of phospholipids, releasing lysophospholipids and fatty acids. This enzyme may be associated with Human, Mouse mitochondria and early endosomes. Most tissues also express read-through transcripts from the upstream gene into this gene,

Target Details

some of which Human, Mouse encode fusion proteins combining the N-terminus of the upstream gene including its JmjC domain with the almost complete coding region of this gene, including the C2 and cytoplasmic phospholipase A2 domains.

Molecular Weight: 88 kDa

NCBI Accession: [NP_001108105](#)

UniProt: [P0C869](#)

Pathways: [ER-Nucleus Signaling](#), [VEGF Signaling](#)

Application Details

Application Notes: WB 1:1000-1:5000

Restrictions: For Research Use only

Handling

Format: Liquid

Concentration: 0.6 mg/mL

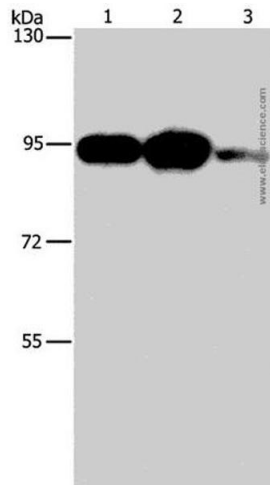
Buffer: PBS with 0.05 % sodium azide and 50 % glycerol, PH7.4

Preservative: Sodium azide

Precaution of Use: This product contains Sodium azide: a POISONOUS AND HAZARDOUS SUBSTANCE which should be handled by trained staff only.

Storage: -20 °C

Storage Comment: Store at -20°C. Avoid freeze / thaw cycles.



Western Blotting

Image 1. Western Blot analysis of Mouse stomach tissue, 293T and Jurkat cell using PLA2G4B Polyclonal Antibody at dilution of 1:1400