



[Go to Product page](#)

Datasheet for ABIN7243217

## anti-CTBP2 antibody

### 3 Images

#### Overview

Quantity:	200 µL
Target:	CTBP2
Reactivity:	Human, Mouse, Rat
Host:	Rabbit
Clonality:	Polyclonal
Conjugate:	This CTBP2 antibody is un-conjugated
Application:	Western Blotting (WB), Immunohistochemistry (IHC), ELISA

#### Product Details

Immunogen:	Synthetic peptide of human CTBP2
Isotype:	IgG
Characteristics:	Polyclonal Antibody
Purification:	Affinity purification

#### Target Details

Target:	CTBP2
Alternative Name:	CTBP2 ( <a href="#">CTBP2 Products</a> )
Background:	This gene produces alternative transcripts encoding two distinct proteins. One protein is a transcriptional repressor, while the other isoform is a major component of specialized synapses known as synaptic ribbons. Both proteins contain a NAD <sup>+</sup> binding domain similar to NAD <sup>+</sup> -dependent 2-hydroxyacid dehydrogenases. A portion of the 3' untranslated region was

## Target Details

---

used to map this gene to chromosome 21q21.3, however, it was noted that similar loci elsewhere in the genome are likely. Blast analysis shows that this gene is present on chromosome 10.

Molecular Weight: 49 kDa

NCBI Accession: [NP\\_001077383](#)

UniProt: [P56545](#)

## Application Details

---

Application Notes: WB 1:500-1:2000, IHC 1:50-1:200

Restrictions: For Research Use only

## Handling

---

Format: Liquid

Concentration: 1.1 mg/mL

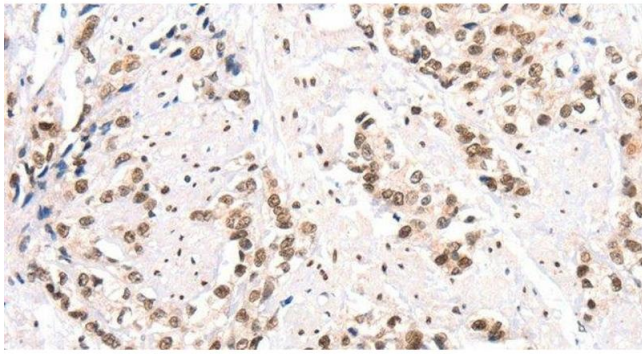
Buffer: PBS with 0.05 % sodium azide and 50 % glycerol, PH7.4

Preservative: Sodium azide

Precaution of Use: This product contains Sodium azide: a POISONOUS AND HAZARDOUS SUBSTANCE which should be handled by trained staff only.

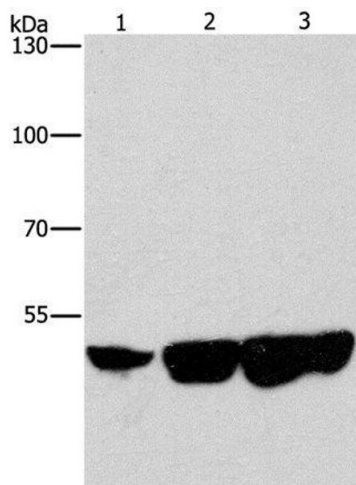
Storage: -20 °C

Storage Comment: Store at -20°C. Avoid freeze / thaw cycles.



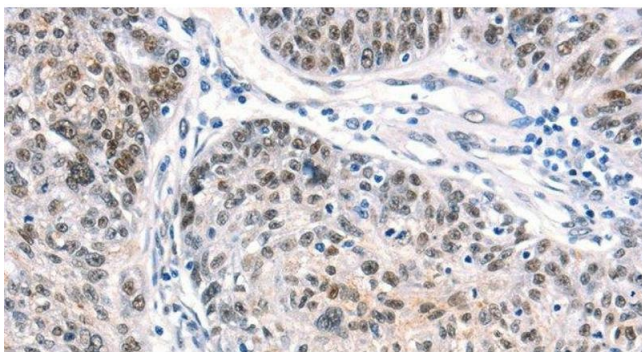
### Immunohistochemistry (Paraffin-embedded Sections)

**Image 1.** Immunohistochemistry of paraffin-embedded Human prostate cancer using CTBP2 Polyclonal Antibody at dilution of 1:40



### Western Blotting

**Image 2.** Western Blot analysis of HeLa, HepG2 and 231 cell using CTBP2 Polyclonal Antibody at dilution of 1:400



### Immunohistochemistry (Paraffin-embedded Sections)

**Image 3.** Immunohistochemistry of paraffin-embedded Human ovarian cancer using CTBP2 Polyclonal Antibody at dilution of 1:40