



[Go to Product page](#)

Datasheet for ABIN7243223

anti-CYLD antibody

2 Images

Overview

Quantity:	200 µL
Target:	CYLD
Reactivity:	Human, Mouse, Rat
Host:	Rabbit
Clonality:	Polyclonal
Conjugate:	This CYLD antibody is un-conjugated
Application:	ELISA, Immunohistochemistry (IHC)

Product Details

Immunogen:	Synthetic peptide of human CYLD
Isotype:	IgG
Characteristics:	Polyclonal Antibody
Purification:	Affinity purification

Target Details

Target:	CYLD
Alternative Name:	CYLD (CYLD Products)
Background:	This gene encodes a cytoplasmic protein with three cytoskeletal-associated protein-glycine-conserved (CAP-GLY) domains that functions as a deubiquitinating enzyme. Mutations in this gene have been associated with cylindromatosis, multiple familial trichoepithelioma, and Brooke-Spiegler syndrome. Alternate transcriptional splice variants, encoding different

Target Details

isoforms, have been characterized.

NCBI Accession: [NP_056062](#)

UniProt: [Q9NQC7](#)

Pathways: [Apoptosis, Activation of Innate immune Response](#)

Application Details

Application Notes: IHC 1:50-1:200

Restrictions: For Research Use only

Handling

Format: Liquid

Concentration: 0.7 mg/mL

Buffer: PBS with 0.05 % sodium azide and 50 % glycerol, PH7.4

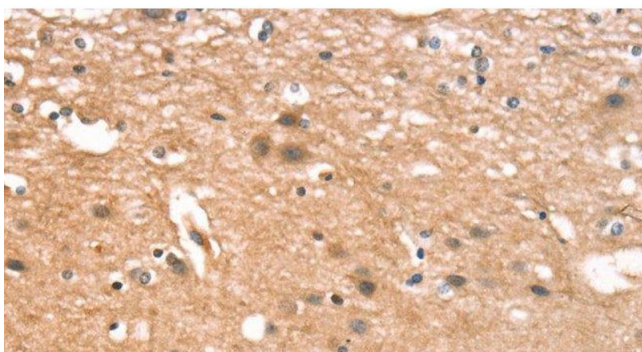
Preservative: Sodium azide

Precaution of Use: This product contains Sodium azide: a POISONOUS AND HAZARDOUS SUBSTANCE which should be handled by trained staff only.

Storage: -20 °C

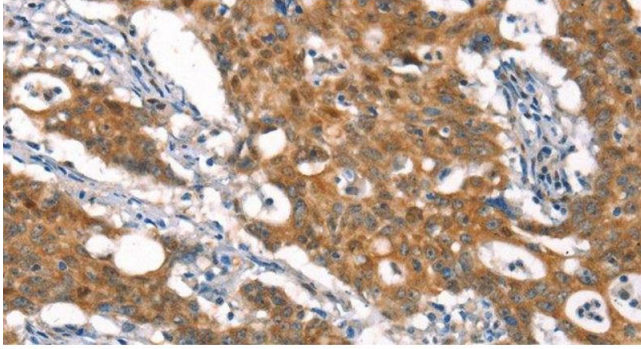
Storage Comment: Store at -20°C. Avoid freeze / thaw cycles.

Images



Immunohistochemistry (Paraffin-embedded Sections)

Image 1. Immunohistochemistry of paraffin-embedded Human brain tissue using CYLD Polyclonal Antibody at dilution 1:35



Immunohistochemistry (Paraffin-embedded Sections)

Image 2. Immunohistochemistry of paraffin-embedded Human gastric cancer tissue using CYLD Polyclonal Antibody at dilution 1:35