

Datasheet for ABIN7243229

**anti-CYP2B6 antibody**[Go to Product page](#)**1** Image

## Overview

Quantity:	200 µL
Target:	CYP2B6
Reactivity:	Human
Host:	Rabbit
Clonality:	Polyclonal
Conjugate:	This CYP2B6 antibody is un-conjugated
Application:	Western Blotting (WB), ELISA

## Product Details

Immunogen:	Synthetic peptide of human CYP2B6
Isotype:	IgG
Characteristics:	Polyclonal Antibody
Purification:	Affinity purification

## Target Details

Target:	CYP2B6
Alternative Name:	CYP2B6 ( <a href="#">CYP2B6 Products</a> )
Background:	This gene, CYP2B6, encodes a member of the cytochrome P450 superfamily of enzymes. The cytochrome P450 proteins are monooxygenases which catalyze many reactions involved in drug metabolism and synthesis of cholesterol, steroids and other lipids. This protein localizes to the endoplasmic reticulum and its expression is induced by phenobarbital. The enzyme is

## Target Details

known to metabolize some xenobiotics, such as the anti-cancer drugs cyclophosphamide and ifosfamide.

Molecular Weight: 56 kDa

NCBI Accession: [NP\\_000758](#)

UniProt: [P20813](#)

## Application Details

Application Notes: WB 1:200-1:1000

Restrictions: For Research Use only

## Handling

Format: Liquid

Concentration: 1.2 mg/mL

Buffer: PBS with 0.05 % sodium azide and 50 % glycerol, PH7.4

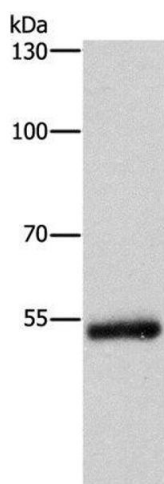
Preservative: Sodium azide

Precaution of Use: This product contains Sodium azide: a POISONOUS AND HAZARDOUS SUBSTANCE which should be handled by trained staff only.

Storage: -20 °C

Storage Comment: Store at -20°C. Avoid freeze / thaw cycles.

## Images



### Western Blotting

**Image 1.** Western Blot analysis of Human colon cancer tissue using CYP2B6 Polyclonal Antibody at dilution of 1:400