

Datasheet for ABIN7243250  
**anti-Desmoglein 1 antibody**[Go to Product page](#)

## 1 Image

## Overview

Quantity:	200 µL
Target:	Desmoglein 1 (DSG1)
Reactivity:	Human, Mouse
Host:	Rabbit
Clonality:	Polyclonal
Conjugate:	This Desmoglein 1 antibody is un-conjugated
Application:	Western Blotting (WB), ELISA

## Product Details

Immunogen:	Synthetic peptide of human DSG1
Isotype:	IgG
Characteristics:	Polyclonal Antibody
Purification:	Affinity purification

## Target Details

Target:	Desmoglein 1 (DSG1)
Alternative Name:	DSG1 ( <a href="#">DSG1 Products</a> )
Background:	<p>Desmosomes are cell-cell junctions between epithelial, myocardial and certain other cell types.</p> <p>Desmoglein 1 is a calcium-binding transmembrane glycoprotein component of desmosomes in vertebrate epithelial cells. Currently, three desmoglein subfamily members have been identified and all are members of the cadherin cell adhesion molecule superfamily. These desmoglein</p>

## Target Details

gene family members are located in a cluster on chromosome 18. The protein encoded by this gene has been identified as the autoantigen of the autoimmune skin blistering disease pemphigus foliaceus.

Molecular Weight: 114 kDa

NCBI Accession: [NP\\_001933](#)

UniProt: [Q02413](#)

Pathways: [Cell-Cell Junction Organization](#)

## Application Details

Application Notes: WB 1:200-1:1000

Restrictions: For Research Use only

## Handling

Format: Liquid

Concentration: 0.4 mg/mL

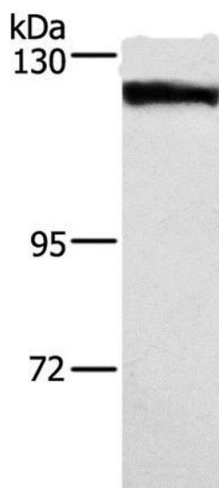
Buffer: PBS with 0.05 % sodium azide and 50 % glycerol, PH7.4

Preservative: Sodium azide

Precaution of Use: This product contains Sodium azide: a POISONOUS AND HAZARDOUS SUBSTANCE which should be handled by trained staff only.

Storage: -20 °C

Storage Comment: Store at -20°C. Avoid freeze / thaw cycles.



Western Blotting

**Image 1.** Western Blot analysis of Human tongue cancer tissue using DSG1 Polyclonal Antibody at dilution of 1:750