

Datasheet for ABIN7243280

**anti-SC4MOL antibody****2** Images[Go to Product page](#)

## Overview

Quantity:	200 µL
Target:	SC4MOL (MSM01)
Reactivity:	Human
Host:	Rabbit
Clonality:	Polyclonal
Conjugate:	This SC4MOL antibody is un-conjugated
Application:	ELISA, Immunohistochemistry (IHC)

## Product Details

Immunogen:	Synthetic peptide of human MSM01
Isotype:	IgG
Characteristics:	Polyclonal Antibody
Purification:	Affinity purification

## Target Details

Target:	SC4MOL (MSM01)
Alternative Name:	MSM01 ( <a href="#">MSM01 Products</a> )
Background:	Sterol-C4-mehtyl oxidase-like protein was isolated based on its similarity to the yeast ERG25 protein. It contains a set of putative metal binding motifs with similarity to that seen in a family of membrane desaturases-hydroxylases. The protein is localized to the endoplasmic reticulum membrane and is believed to function in cholesterol biosynthesis. Alternatively spliced

## Target Details

transcript variants encoding distinct isoforms have been found for this gene.

NCBI Accession: [NP\\_006736](#)

UniProt: [Q15800](#)

## Application Details

Application Notes: IHC 1:50-1:200

Restrictions: For Research Use only

## Handling

Format: Liquid

Concentration: 0.6 mg/mL

Buffer: PBS with 0.05 % sodium azide and 50 % glycerol, PH7.4

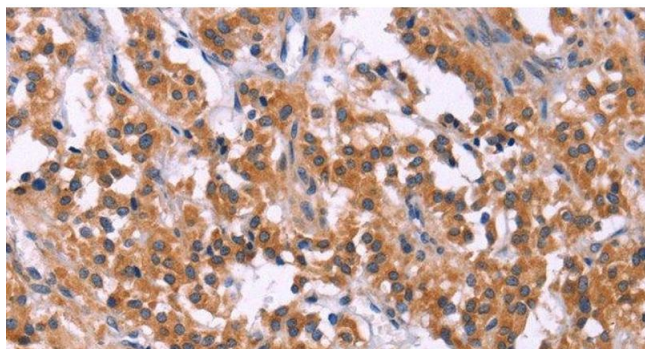
Preservative: Sodium azide

Precaution of Use: This product contains Sodium azide: a POISONOUS AND HAZARDOUS SUBSTANCE which should be handled by trained staff only.

Storage: -20 °C

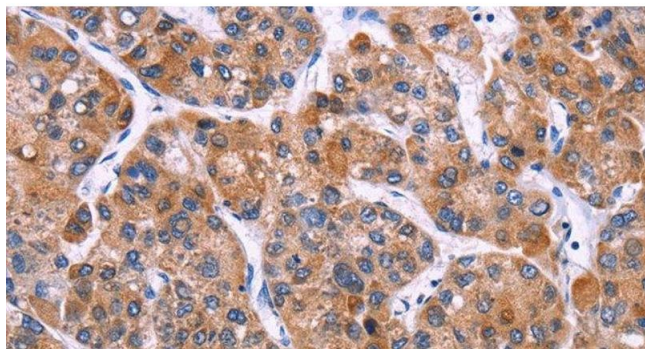
Storage Comment: Store at -20°C. Avoid freeze / thaw cycles.

## Images



### Immunohistochemistry (Paraffin-embedded Sections)

**Image 1.** Immunohistochemistry of paraffin-embedded Human thyroid cancer tissue using MSM01 Polyclonal Antibody at dilution 1:40



#### Immunohistochemistry (Paraffin-embedded Sections)

**Image 2.** Immunohistochemistry of paraffin-embedded Human liver cancer tissue using MSMO1 Polyclonal Antibody at dilution 1:40