

Datasheet for ABIN7243292

anti-EVC2 antibody

3 Images

[Go to Product page](#)

Overview

Quantity:	200 µL
Target:	EVC2
Reactivity:	Human, Mouse
Host:	Rabbit
Clonality:	Polyclonal
Conjugate:	This EVC2 antibody is un-conjugated
Application:	ELISA, Immunohistochemistry (IHC), Western Blotting (WB)

Product Details

Immunogen:	Synthetic peptide of human EVC2
Isotype:	IgG
Characteristics:	Polyclonal Antibody
Purification:	Affinity purification

Target Details

Target:	EVC2
Alternative Name:	EVC2 (EVC2 Products)
Background:	<p>This gene encodes a protein that functions in bone formation and skeletal development. Mutations in this gene, as well as in a neighboring gene that lies in a head-to-head configuration, cause Ellis-van Creveld syndrome, an autosomal recessive skeletal dysplasia that is also known as chondroectodermal dysplasia. Mutations in this gene also cause acrofacial</p>

Target Details

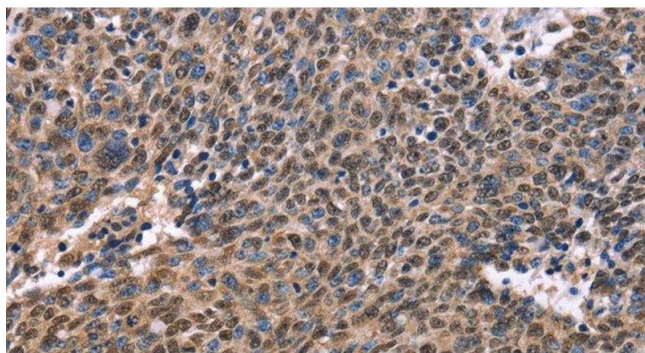
	dysostosis Weyers type, also referred to as Curry-Hall syndrome, a disease that combines limb and facial abnormalities. Alternative splicing results in multiple transcript variants.
Molecular Weight:	148 kDa
NCBI Accession:	NP_667338
UniProt:	Q86UK5
Pathways:	Hedgehog Signaling

Application Details

Application Notes:	WB 1:200-1:1000, IHC 1:50-1:200
Restrictions:	For Research Use only

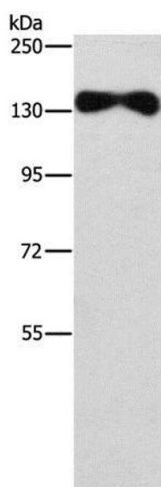
Handling

Format:	Liquid
Concentration:	1.5 mg/mL
Buffer:	PBS with 0.05 % sodium azide and 50 % glycerol, PH7.4
Preservative:	Sodium azide
Precaution of Use:	This product contains Sodium azide: a POISONOUS AND HAZARDOUS SUBSTANCE which should be handled by trained staff only.
Storage:	-20 °C
Storage Comment:	Store at -20°C. Avoid freeze / thaw cycles.



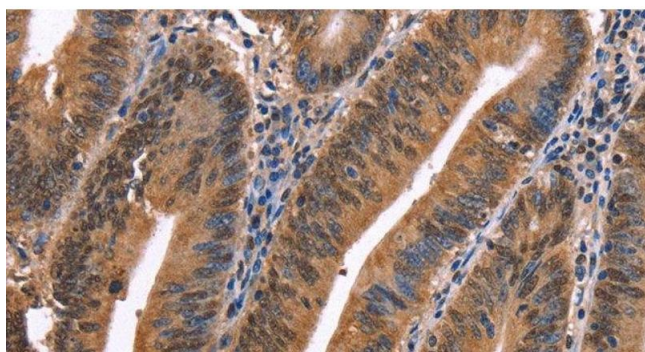
Immunohistochemistry (Paraffin-embedded Sections)

Image 1. Immunohistochemistry of paraffin-embedded Human ovarian cancer using EVC2 Polyclonal Antibody at dilution of 1:40



Western Blotting

Image 2. Western Blot analysis of Human placenta tissue using EVC2 Polyclonal Antibody at dilution of 1:450



Immunohistochemistry (Paraffin-embedded Sections)

Image 3. Immunohistochemistry of paraffin-embedded Human colon cancer using EVC2 Polyclonal Antibody at dilution of 1:40