

Datasheet for ABIN7243310

anti-Spastin antibody**2** Images[Go to Product page](#)

Overview

Quantity:	200 µL
Target:	Spastin (SPAST)
Reactivity:	Human, Mouse, Rat
Host:	Rabbit
Clonality:	Polyclonal
Conjugate:	This Spastin antibody is un-conjugated
Application:	ELISA, Immunohistochemistry (IHC)

Product Details

Immunogen:	Synthetic peptide of human SPAST
Isotype:	IgG
Characteristics:	Polyclonal Antibody
Purification:	Affinity purification

Target Details

Target:	Spastin (SPAST)
Alternative Name:	SPAST (SPAST Products)
Background:	This gene encodes a member of the AAA (ATPases associated with a variety of cellular activities) protein family. Members of this protein family share an ATPase domain and have roles in diverse cellular processes including membrane trafficking, intracellular motility, organelle biogenesis, protein folding, and proteolysis. The encoded ATPase may be involved in

Target Details

the assembly or function of nuclear protein complexes. Two transcript variants encoding distinct isoforms have been identified for this gene. Other alternative splice variants have been described but their full length sequences have not been determined. Mutations associated with this gene cause the most frequent form of autosomal dominant spastic paraplegia 4.

NCBI Accession: [NP_055761](#)

UniProt: [Q9UBP0](#)

Pathways: [Microtubule Dynamics](#), [M Phase](#), [Regulation of Cell Size](#)

Application Details

Application Notes: IHC 1:50-1:200

Restrictions: For Research Use only

Handling

Format: Liquid

Concentration: 0.6 mg/mL

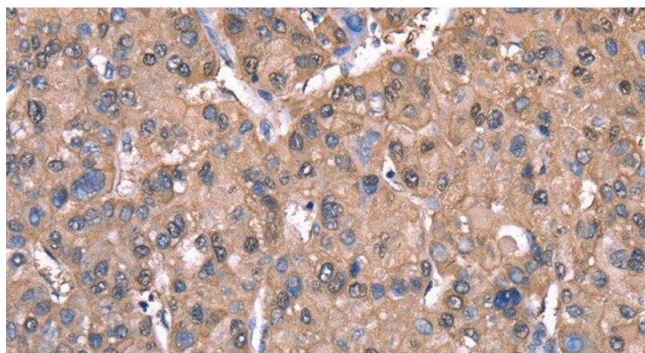
Buffer: PBS with 0.05 % sodium azide and 50 % glycerol, PH7.4

Preservative: Sodium azide

Precaution of Use: This product contains Sodium azide: a POISONOUS AND HAZARDOUS SUBSTANCE which should be handled by trained staff only.

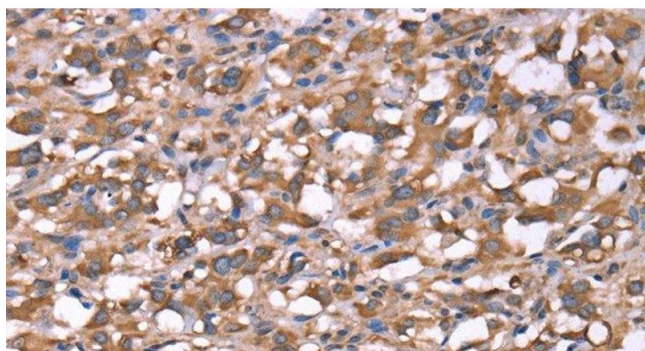
Storage: -20 °C

Storage Comment: Store at -20°C. Avoid freeze / thaw cycles.



Immunohistochemistry (Paraffin-embedded Sections)

Image 1. Immunohistochemistry of paraffin-embedded Human liver cancer tissue using SPAST Polyclonal Antibody at dilution 1:40



Immunohistochemistry (Paraffin-embedded Sections)

Image 2. Immunohistochemistry of paraffin-embedded Human thyroid cancer tissue using SPAST Polyclonal Antibody at dilution 1:40