

Datasheet for ABIN7243313

anti-FUT1 antibody**3** Images[Go to Product page](#)

Overview

Quantity:	200 µL
Target:	FUT1
Reactivity:	Human
Host:	Rabbit
Clonality:	Polyclonal
Conjugate:	This FUT1 antibody is un-conjugated
Application:	Western Blotting (WB), ELISA, Immunohistochemistry (IHC)

Product Details

Immunogen:	Synthetic peptide of human FUT1
Isotype:	IgG
Characteristics:	Polyclonal Antibody
Purification:	Affinity purification

Target Details

Target:	FUT1
Alternative Name:	FUT1 (FUT1 Products)
Background:	The protein encoded by this gene is a Golgi stack membrane protein that is involved in the creation of a precursor of the H antigen, which is required for the final step in the soluble A and B antigen synthesis pathway. This gene is one of two encoding the galactoside 2-L-fucosyltransferase enzyme. Mutations in this gene are a cause of the H-Bombay blood group.

Target Details

Molecular Weight:	41 kDa
NCBI Accession:	NP_000139
UniProt:	P19526

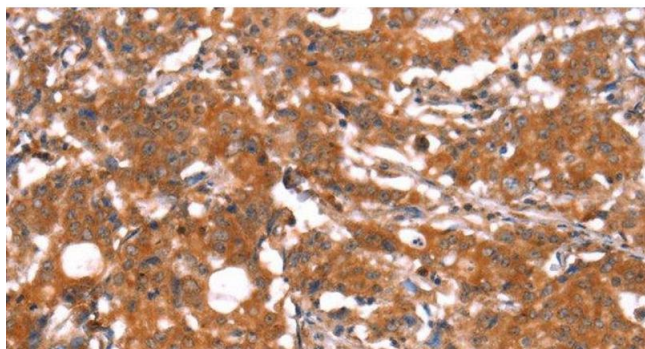
Application Details

Application Notes:	WB 1:500-1:2000, IHC 1:50-1:200
Restrictions:	For Research Use only

Handling

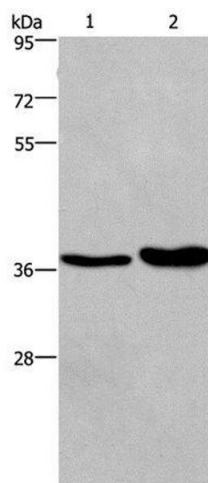
Format:	Liquid
Concentration:	0.6 mg/mL
Buffer:	PBS with 0.05 % sodium azide and 50 % glycerol, PH7.4
Preservative:	Sodium azide
Precaution of Use:	This product contains Sodium azide: a POISONOUS AND HAZARDOUS SUBSTANCE which should be handled by trained staff only.
Storage:	-20 °C
Storage Comment:	Store at -20°C. Avoid freeze / thaw cycles.

Images



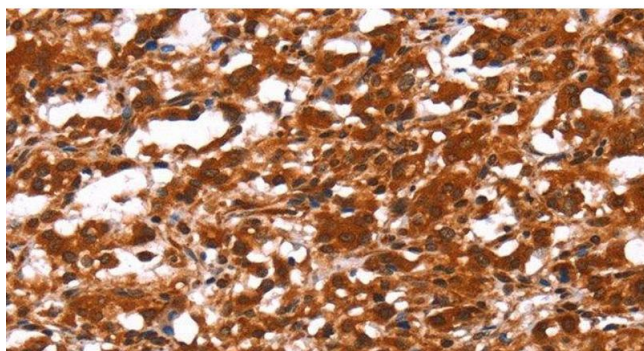
Immunohistochemistry (Paraffin-embedded Sections)

Image 1. Immunohistochemistry of paraffin-embedded Human gastric cancer using FUT1 Polyclonal Antibody at dilution of 1:30



Western Blotting

Image 2. Western Blot analysis of Human testis tissue and transitional cell carcinoma of bladder tissue using FUT1 Polyclonal Antibody at dilution of 1:250



Immunohistochemistry (Paraffin-embedded Sections)

Image 3. Immunohistochemistry of paraffin-embedded Human thyroid cancer using FUT1 Polyclonal Antibody at dilution of 1:30