



Datasheet for ABIN7243319  
**anti-G Antigen 12I antibody**



[Go to Product page](#)

2 Images

Overview

Quantity:	200 µL
Target:	G Antigen 12I (GAGE12I)
Reactivity:	Human
Host:	Rabbit
Clonality:	Polyclonal
Conjugate:	This G Antigen 12I antibody is un-conjugated
Application:	Immunohistochemistry (IHC), ELISA

Product Details

Immunogen:	Synthetic peptide of human GAGE12I
Isotype:	IgG
Characteristics:	Polyclonal Antibody
Purification:	Affinity purification

Target Details

Target:	G Antigen 12I (GAGE12I)
Alternative Name:	GAGE12I ( <a href="#">GAGE12I Products</a> )
Background:	This gene belongs to a family of genes that are expressed in a variety of tumors but not in normal tissues, except for the testis. The sequences of the family members are highly related but differ by scattered nucleotide substitutions. The antigenic peptide YYWPRPRRY, which is also encoded by several other family members, is recognized by autologous cytolytic T

## Target Details

lymphocytes.

NCBI Accession: [NP\\_001468](#)

UniProt: [P0CL82](#)

## Application Details

Application Notes: IHC 1:50-1:200

Restrictions: For Research Use only

## Handling

Format: Liquid

Concentration: 0.3 mg/mL

Buffer: PBS with 0.05 % sodium azide and 50 % glycerol, PH7.4

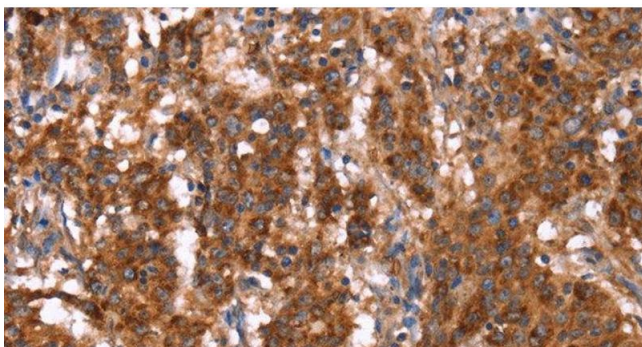
Preservative: Sodium azide

Precaution of Use: This product contains Sodium azide: a POISONOUS AND HAZARDOUS SUBSTANCE which should be handled by trained staff only.

Storage: -20 °C

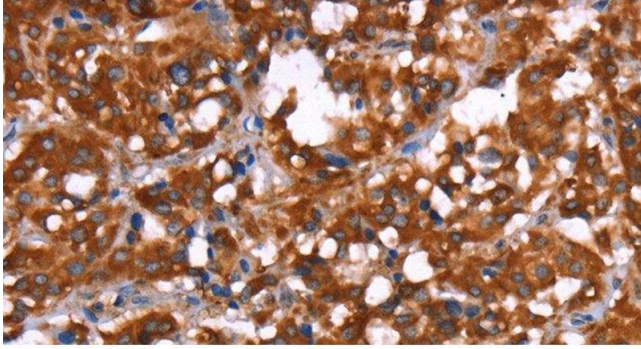
Storage Comment: Store at -20°C. Avoid freeze / thaw cycles.

## Images



### Immunohistochemistry (Paraffin-embedded Sections)

**Image 1.** Immunohistochemistry of paraffin-embedded Human gastric cancer tissue using GAGE12I Polyclonal Antibody at dilution 1:30



### Immunohistochemistry (Paraffin-embedded Sections)

**Image 2.** Immunohistochemistry of paraffin-embedded Human thyroid cancer tissue using GAGE12I Polyclonal Antibody at dilution 1:30