

Datasheet for ABIN7243337  
**anti-Glypican 6 antibody**

## 4 Images

[Go to Product page](#)

## Overview

Quantity:	200 µL
Target:	Glypican 6 (GPC6)
Reactivity:	Human, Mouse
Host:	Rabbit
Clonality:	Polyclonal
Conjugate:	This Glypican 6 antibody is un-conjugated
Application:	ELISA, Immunohistochemistry (IHC), Western Blotting (WB)

## Product Details

Immunogen:	Synthetic peptide of human GPC6
Isotype:	IgG
Characteristics:	Polyclonal Antibody
Purification:	Affinity purification

## Target Details

Target:	Glypican 6 (GPC6)
Alternative Name:	GPC6 ( <a href="#">GPC6 Products</a> )
Background:	The glypicans comprise a family of glycosylphosphatidylinositol-anchored heparan sulfate proteoglycans, and they have been implicated in the control of cell growth and cell division. The glypican encoded by this gene is a putative cell surface coreceptor for growth factors, extracellular matrix proteins, proteases and anti-proteases.

## Target Details

Molecular Weight:	63 kDa
NCBI Accession:	<a href="#">NP_005699</a>
UniProt:	<a href="#">Q9Y625</a>
Pathways:	<a href="#">Glycosaminoglycan Metabolic Process</a>

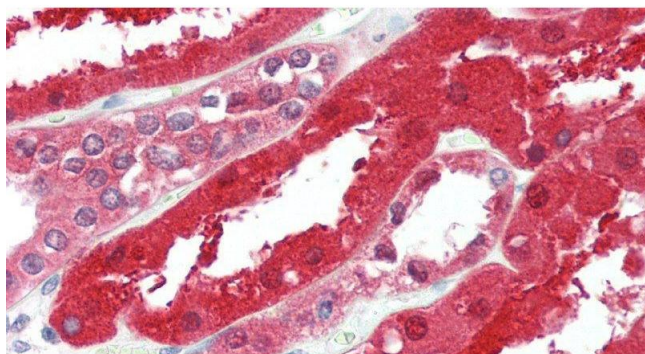
## Application Details

Application Notes:	WB 1:500-1:2000, IHC 1:50-1:200
Restrictions:	For Research Use only

## Handling

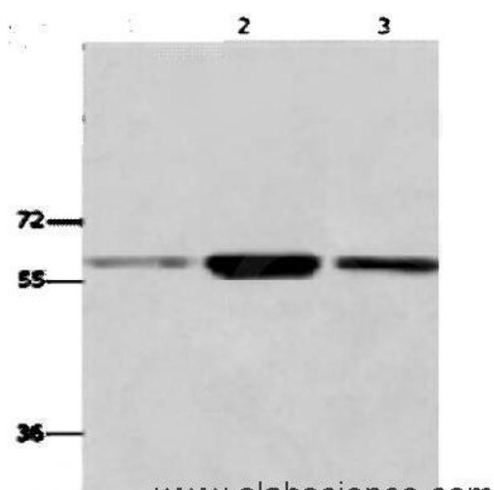
Format:	Liquid
Concentration:	0.9 mg/mL
Buffer:	PBS with 0.05 % sodium azide and 50 % glycerol, PH7.4
Preservative:	Sodium azide
Precaution of Use:	This product contains Sodium azide: a POISONOUS AND HAZARDOUS SUBSTANCE which should be handled by trained staff only.
Storage:	-20 °C
Storage Comment:	Store at -20°C. Avoid freeze / thaw cycles.

## Images



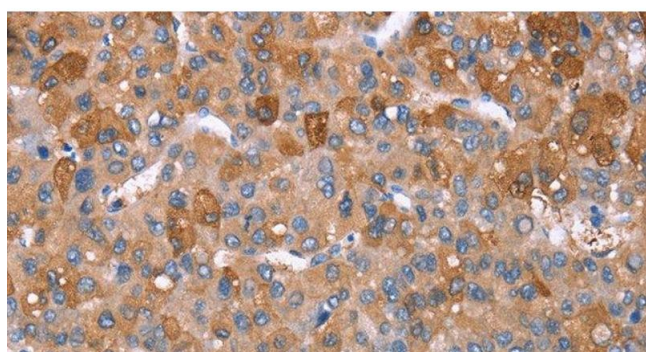
### Immunohistochemistry (Paraffin-embedded Sections)

**Image 1.** Immunohistochemistry of paraffin-embedded Kidney tissue using GPC6 Polyclonal Antibody at dilution of 1:90.



#### Western Blotting

**Image 2.** Western Blot analysis of K562,231, Human fetal liver tissue using GPC6 Polyclonal Antibody at dilution of 1:700



#### Immunohistochemistry (Paraffin-embedded Sections)

**Image 3.** Immunohistochemistry of paraffin-embedded Human liver cancer tissue using GPC6 Polyclonal Antibody at dilution 1:40

Please check the [product details page](#) for more images. Overall 4 images are available for ABIN7243337.