

Datasheet for ABIN7243382

anti-HMGCS2 antibody**3** Images[Go to Product page](#)

Overview

Quantity:	200 µL
Target:	HMGCS2
Reactivity:	Human, Mouse
Host:	Rabbit
Clonality:	Polyclonal
Conjugate:	This HMGCS2 antibody is un-conjugated
Application:	Western Blotting (WB), ELISA, Immunohistochemistry (IHC)

Product Details

Immunogen:	Synthetic peptide of human HMGCS2
Isotype:	IgG
Characteristics:	Polyclonal Antibody
Purification:	Affinity purification

Target Details

Target:	HMGCS2
Alternative Name:	HMGCS2 (HMGCS2 Products)
Background:	The protein encoded by this gene belongs to the HMG-CoA synthase family. It is a mitochondrial enzyme that catalyzes the first reaction of ketogenesis, a metabolic pathway that provides lipid-derived energy for various organs during times of carbohydrate deprivation, such as fasting. Mutations in this gene are associated with HMG-CoA synthase deficiency.

Target Details

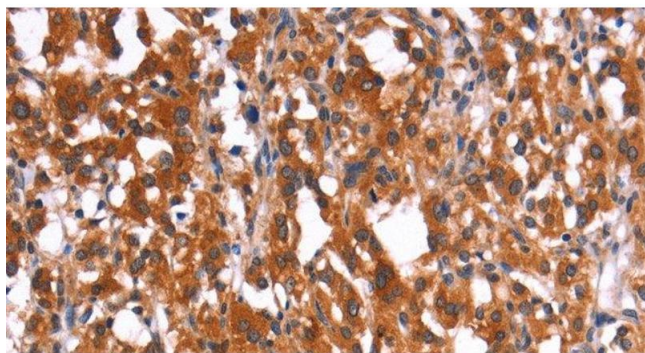
	Alternatively spliced transcript variants encoding different isoforms have been found for this gene.
Molecular Weight:	57 kDa
NCBI Accession:	NP_005509
UniProt:	P54868
Pathways:	Response to Growth Hormone Stimulus , Cellular Response to Molecule of Bacterial Origin , Regulation of Lipid Metabolism by PPARalpha

Application Details

Application Notes:	WB 1:500-1:2000, IHC 1:100-1:300
Restrictions:	For Research Use only

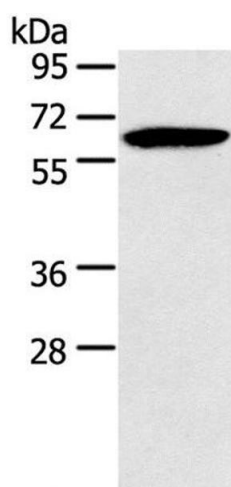
Handling

Format:	Liquid
Concentration:	0.4 mg/mL
Buffer:	PBS with 0.05 % sodium azide and 50 % glycerol, PH7.4
Preservative:	Sodium azide
Precaution of Use:	This product contains Sodium azide: a POISONOUS AND HAZARDOUS SUBSTANCE which should be handled by trained staff only.
Storage:	-20 °C
Storage Comment:	Store at -20°C. Avoid freeze / thaw cycles.



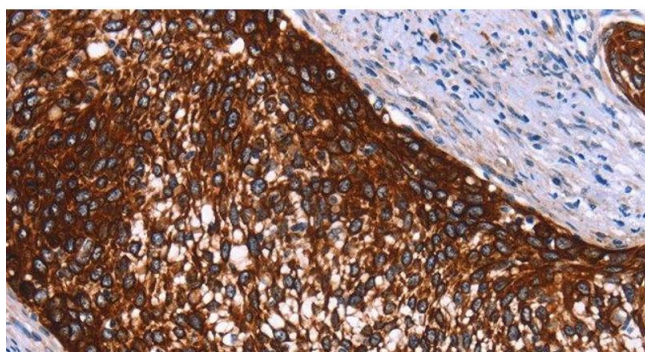
Immunohistochemistry (Paraffin-embedded Sections)

Image 1. Immunohistochemistry of paraffin-embedded Human thyroid cancer using HMGCs2 Polyclonal Antibody at dilution of 1:40



Western Blotting

Image 2. Western Blot analysis of Mouse brain tissue using HMGCs2 Polyclonal Antibody at dilution of 1:200



Immunohistochemistry (Paraffin-embedded Sections)

Image 3. Immunohistochemistry of paraffin-embedded Human cervical cancer using HMGCs2 Polyclonal Antibody at dilution of 1:40