

Datasheet for ABIN7243439
anti-IL17 Receptor B antibody

3 Images

[Go to Product page](#)

Overview

Quantity:	200 µL
Target:	IL17 Receptor B (IL17RB)
Reactivity:	Human
Host:	Rabbit
Clonality:	Polyclonal
Conjugate:	This IL17 Receptor B antibody is un-conjugated
Application:	Western Blotting (WB), Immunohistochemistry (IHC), ELISA

Product Details

Immunogen:	Synthetic peptide of human IL17RB
Isotype:	IgG
Characteristics:	Polyclonal Antibody
Purification:	Affinity purification

Target Details

Target:	IL17 Receptor B (IL17RB)
Alternative Name:	IL17RB (IL17RB Products)
Background:	The protein encoded by this gene is a cytokine receptor. This receptor specifically binds to IL17B and IL17E, but does not bind to IL17 and IL17C. This receptor has been shown to mediate the activation of NF-kappaB and the production of IL8 induced by IL17E. The expression of the rat counterpart of this gene was found to be significantly up-regulated during

Target Details

intestinal inflammation, which suggested the immunoregulatory activity of this receptor.

Molecular Weight: 56 kDa

NCBI Accession: [NP_061195](#)

UniProt: [Q9NRM6](#)

Application Details

Application Notes: WB 1:200-1:1000, IHC 1:50-1:200

Restrictions: For Research Use only

Handling

Format: Liquid

Concentration: 0.9 mg/mL

Buffer: PBS with 0.05 % sodium azide and 50 % glycerol, PH7.4

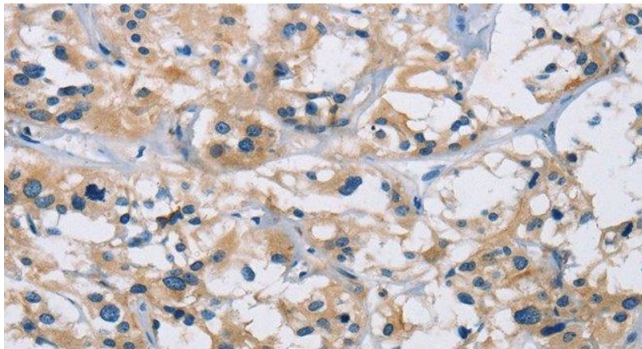
Preservative: Sodium azide

Precaution of Use: This product contains Sodium azide: a POISONOUS AND HAZARDOUS SUBSTANCE which should be handled by trained staff only.

Storage: -20 °C

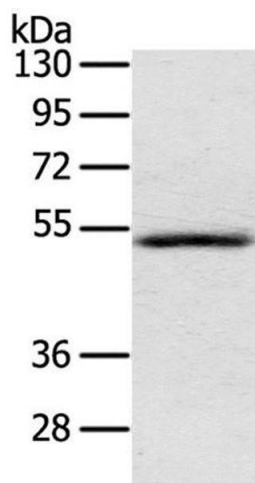
Storage Comment: Store at -20°C. Avoid freeze / thaw cycles.

Images



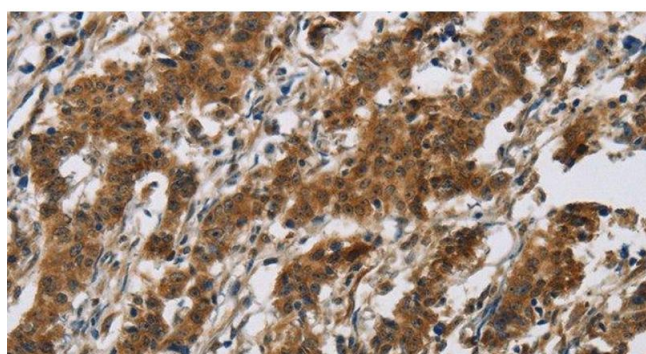
Immunohistochemistry (Paraffin-embedded Sections)

Image 1. Immunohistochemistry of paraffin-embedded Human thyroid cancer using IL17RB Polyclonal Antibody at dilution of 1:40



Western Blotting

Image 2. Western Blot analysis of Human normal liver tissue using IL17RB Polyclonal Antibody at dilution of 1:200



Immunohistochemistry (Paraffin-embedded Sections)

Image 3. Immunohistochemistry of paraffin-embedded Human gastric cancer using IL17RB Polyclonal Antibody at dilution of 1:40