

Datasheet for ABIN7243442  
**anti-IL5RA antibody**



[Go to Product page](#)

3 Images

### Overview

Quantity:	200 µL
Target:	IL5RA
Reactivity:	Human, Mouse
Host:	Rabbit
Clonality:	Polyclonal
Conjugate:	This IL5RA antibody is un-conjugated
Application:	Western Blotting (WB), ELISA, Immunohistochemistry (IHC)

### Product Details

Immunogen:	Synthetic peptide of human IL5RA
Isotype:	IgG
Characteristics:	Polyclonal Antibody
Purification:	Affinity purification

### Target Details

Target:	IL5RA
Alternative Name:	IL5RA ( <a href="#">IL5RA Products</a> )
Background:	The protein encoded by this gene is an interleukin 5 specific subunit of a heterodimeric cytokine receptor. The receptor is comprised of a ligand specific alpha subunit and a signal transducing beta subunit shared by the receptors for interleukin 3 (IL3), colony stimulating factor 2 (CSF2/GM-CSF), and interleukin 5 (IL5). The binding of this protein to IL5 depends on the beta

## Target Details

---

subunit. The beta subunit is activated by the ligand binding, and is required for the biological activities of IL5. This protein has been found to interact with syndecan binding protein (syntenin), which is required for IL5 mediated activation of the transcription factor SOX4. Several alternatively spliced transcript variants encoding four distinct isoforms have been reported.

Molecular Weight: 48 kDa

NCBI Accession: [NP\\_000555](#)

UniProt: [Q01344](#)

Pathways: [JAK-STAT Signaling](#)

## Application Details

---

Application Notes: WB 1:200-1:1000, IHC 1:50-1:200

Restrictions: For Research Use only

## Handling

---

Format: Liquid

Concentration: 0.9 mg/mL

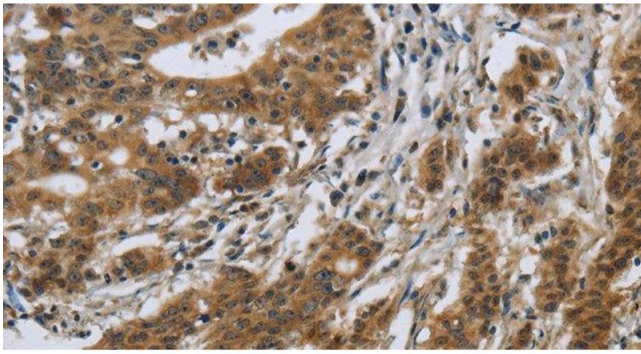
Buffer: PBS with 0.05 % sodium azide and 50 % glycerol, PH7.4

Preservative: Sodium azide

Precaution of Use: This product contains Sodium azide: a POISONOUS AND HAZARDOUS SUBSTANCE which should be handled by trained staff only.

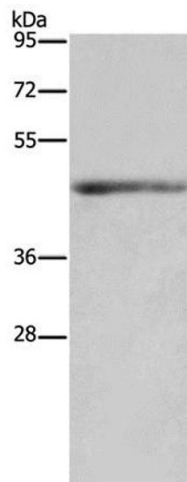
Storage: -20 °C

Storage Comment: Store at -20°C. Avoid freeze / thaw cycles.



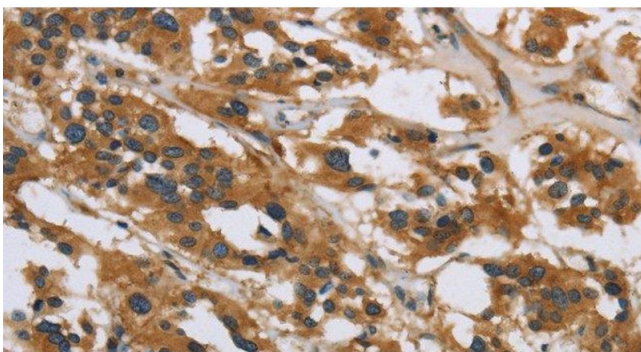
#### Immunohistochemistry (Paraffin-embedded Sections)

**Image 1.** Immunohistochemistry of paraffin-embedded Human gastric cancer using IL5RA Polyclonal Antibody at dilution of 1:40



#### Western Blotting

**Image 2.** Western Blot analysis of Mouse heart tissue using IL5RA Polyclonal Antibody at dilution of 1:650



#### Immunohistochemistry (Paraffin-embedded Sections)

**Image 3.** Immunohistochemistry of paraffin-embedded Human thyroid cancer using IL5RA Polyclonal Antibody at dilution of 1:40