

Datasheet for ABIN7243505

anti-KCNN4 antibody**3** Images[Go to Product page](#)

Overview

Quantity:	200 µL
Target:	KCNN4
Reactivity:	Human, Mouse
Host:	Rabbit
Clonality:	Polyclonal
Conjugate:	This KCNN4 antibody is un-conjugated
Application:	Western Blotting (WB), ELISA, Immunohistochemistry (IHC)

Product Details

Immunogen:	Synthetic peptide of human KCNN4
Isotype:	IgG
Characteristics:	Polyclonal Antibody
Purification:	Affinity purification

Target Details

Target:	KCNN4
Alternative Name:	KCNN4 (KCNN4 Products)
Background:	The protein encoded by this gene is part of a potentially heterotetrameric voltage-independent potassium channel that is activated by intracellular calcium. Activation is followed by membrane hyperpolarization, which promotes calcium influx. The encoded protein may be part of the predominant calcium-activated potassium channel in T-lymphocytes. This gene is similar

Target Details

to other KCNN family potassium channel genes, but it differs enough to possibly be considered as part of a new subfamily.

Molecular Weight: 48 kDa

NCBI Accession: [NP_002241](#)

UniProt: [O15554](#)

Application Details

Application Notes: WB 1:500-1:2000, IHC 1:50-1:200

Restrictions: For Research Use only

Handling

Format: Liquid

Concentration: 0.9 mg/mL

Buffer: PBS with 0.05 % sodium azide and 50 % glycerol, PH7.4

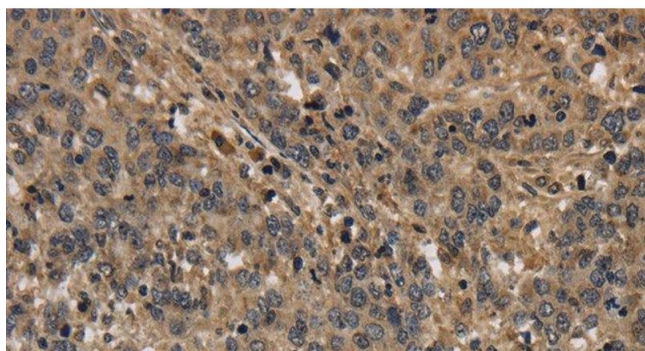
Preservative: Sodium azide

Precaution of Use: This product contains Sodium azide: a POISONOUS AND HAZARDOUS SUBSTANCE which should be handled by trained staff only.

Storage: -20 °C

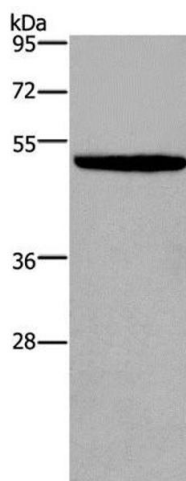
Storage Comment: Store at -20°C. Avoid freeze / thaw cycles.

Images



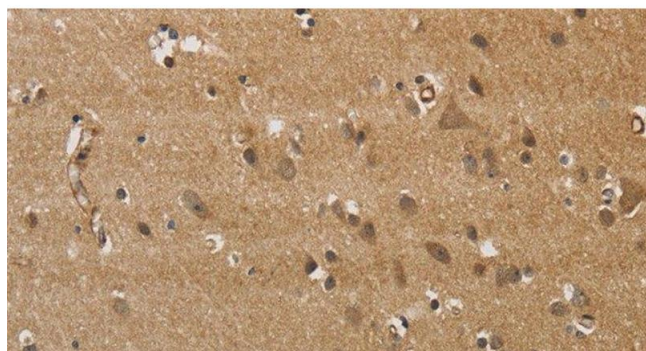
Immunohistochemistry (Paraffin-embedded Sections)

Image 1. Immunohistochemistry of paraffin-embedded Human liver cancer using KCNN4 Polyclonal Antibody at dilution of 1:40



Western Blotting

Image 2. Western Blot analysis of NIH/3T3 cell using KCNN4 Polyclonal Antibody at dilution of 1:450



Immunohistochemistry (Paraffin-embedded Sections)

Image 3. Immunohistochemistry of paraffin-embedded Human brain using KCNN4 Polyclonal Antibody at dilution of 1:40