



[Go to Product page](#)

Datasheet for ABIN7243511

## anti-KIF22 antibody

### 3 Images

#### Overview

Quantity:	200 µL
Target:	KIF22
Reactivity:	Human
Host:	Rabbit
Clonality:	Polyclonal
Conjugate:	This KIF22 antibody is un-conjugated
Application:	Western Blotting (WB), ELISA, Immunohistochemistry (IHC)

#### Product Details

Immunogen:	Synthetic peptide of human KIF22
Isotype:	IgG
Characteristics:	Polyclonal Antibody
Purification:	Affinity purification

#### Target Details

Target:	KIF22
Alternative Name:	KIF22 ( <a href="#">KIF22 Products</a> )
Background:	The protein encoded by this gene is a member of the kinesin-like protein family. The family members are microtubule-dependent molecular motors that transport organelles within cells and move chromosomes during cell division. The C-terminal half of this protein has been shown to bind DNA. Studies with the Xenopus homolog suggests its essential role in

## Target Details

metaphase chromosome alignment and maintenance. Alternatively spliced transcript variants encoding different isoforms have been found for this gene.

Molecular Weight: 73 kDa

NCBI Accession: [NP\\_015556](#)

UniProt: [Q14807](#)

## Application Details

Application Notes: WB 1:200-1:1000, IHC 1:50-1:200

Restrictions: For Research Use only

## Handling

Format: Liquid

Concentration: 0.6 mg/mL

Buffer: PBS with 0.05 % sodium azide and 50 % glycerol, PH7.4

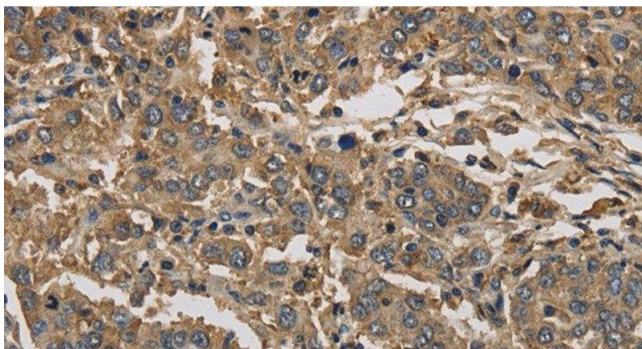
Preservative: Sodium azide

Precaution of Use: This product contains Sodium azide: a POISONOUS AND HAZARDOUS SUBSTANCE which should be handled by trained staff only.

Storage: -20 °C

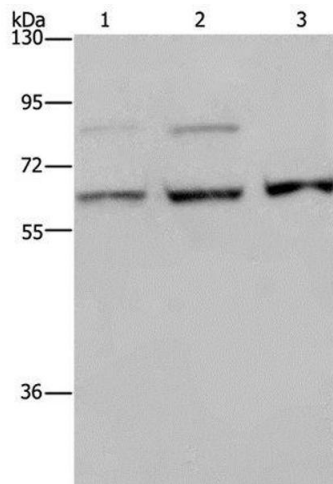
Storage Comment: Store at -20°C. Avoid freeze / thaw cycles.

## Images



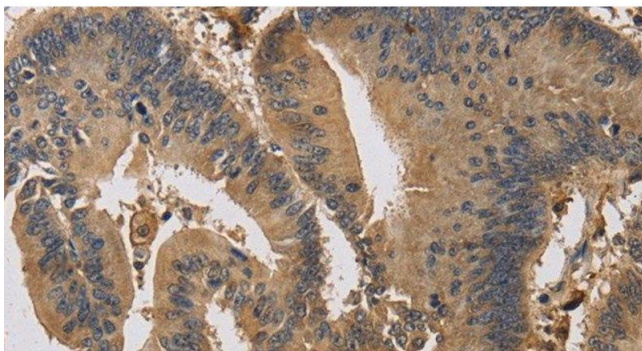
### Immunohistochemistry (Paraffin-embedded Sections)

**Image 1.** Immunohistochemistry of paraffin-embedded Human liver cancer using KIF22 Polyclonal Antibody at dilution of 1:30



### Western Blotting

**Image 2.** Western Blot analysis of A431, MCF-7 and HeLa cell using KIF22 Polyclonal Antibody at dilution of 1:200



### Immunohistochemistry (Paraffin-embedded Sections)

**Image 3.** Immunohistochemistry of paraffin-embedded Human colon cancer using KIF22 Polyclonal Antibody at dilution of 1:30