

Datasheet for ABIN7243532

**anti-UBP1 antibody****2** Images[Go to Product page](#)

## Overview

Quantity:	200 µL
Target:	UBP1
Reactivity:	Human, Mouse
Host:	Rabbit
Clonality:	Polyclonal
Conjugate:	This UBP1 antibody is un-conjugated
Application:	Western Blotting (WB), ELISA, Immunohistochemistry (IHC)

## Product Details

Immunogen:	Synthetic peptide of human UBP1
Isotype:	IgG
Characteristics:	Polyclonal Antibody
Purification:	Affinity purification

## Target Details

Target:	UBP1
Alternative Name:	UBP1 ( <a href="#">UBP1 Products</a> )
Background:	LBP1 (Upstream-binding protein 1), also designated UBP1, LBP1A or LBP1B, is a 540 amino acid protein that belongs to the grh/CP2 family (grainyhead transcription factor family). LBP1 is a transcriptional activator that regulates the placental expression of CYP11A1 and activates the Hemoglobin globin promoter in erythroid cells. LBP1 is responsible for repressing transcription

## Target Details

of HIV-1 by binding to and preventing TFIIID from interacting with its promoter region. Null expression of LBP1 causes uterine growth retardation in mice embryos suggesting a critical role in extraembryonic angiogenesis.

Molecular Weight: 60 kDa

NCBI Accession: [NP\\_001121632](#)

UniProt: [Q9NZI7](#)

## Application Details

Application Notes: WB 1:500-1:2000, IHC 1:50-1:200

Restrictions: For Research Use only

## Handling

Format: Liquid

Concentration: 0.7 mg/mL

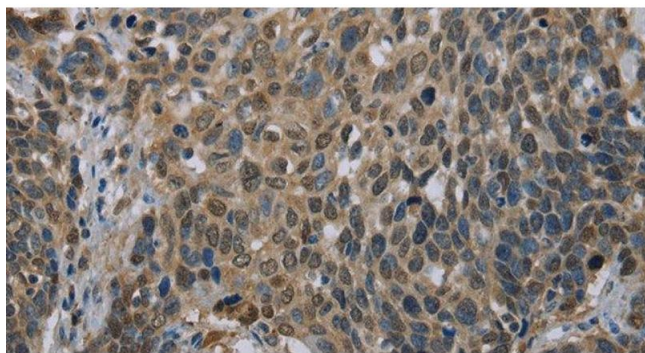
Buffer: PBS with 0.05 % sodium azide and 50 % glycerol, PH7.4

Preservative: Sodium azide

Precaution of Use: This product contains Sodium azide: a POISONOUS AND HAZARDOUS SUBSTANCE which should be handled by trained staff only.

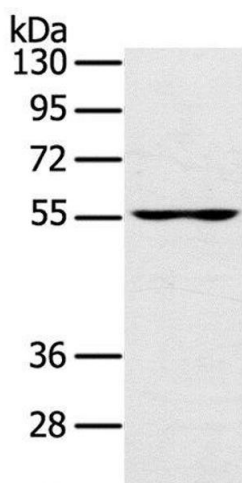
Storage: -20 °C

Storage Comment: Store at -20°C. Avoid freeze / thaw cycles.



#### Immunohistochemistry (Paraffin-embedded Sections)

**Image 1.** Immunohistochemistry of paraffin-embedded Human cervical cancer using UB1 Polyclonal Antibody at dilution of 1:40



#### Western Blotting

**Image 2.** Western Blot analysis of PC3 cell using UB1 Polyclonal Antibody at dilution of 1:200